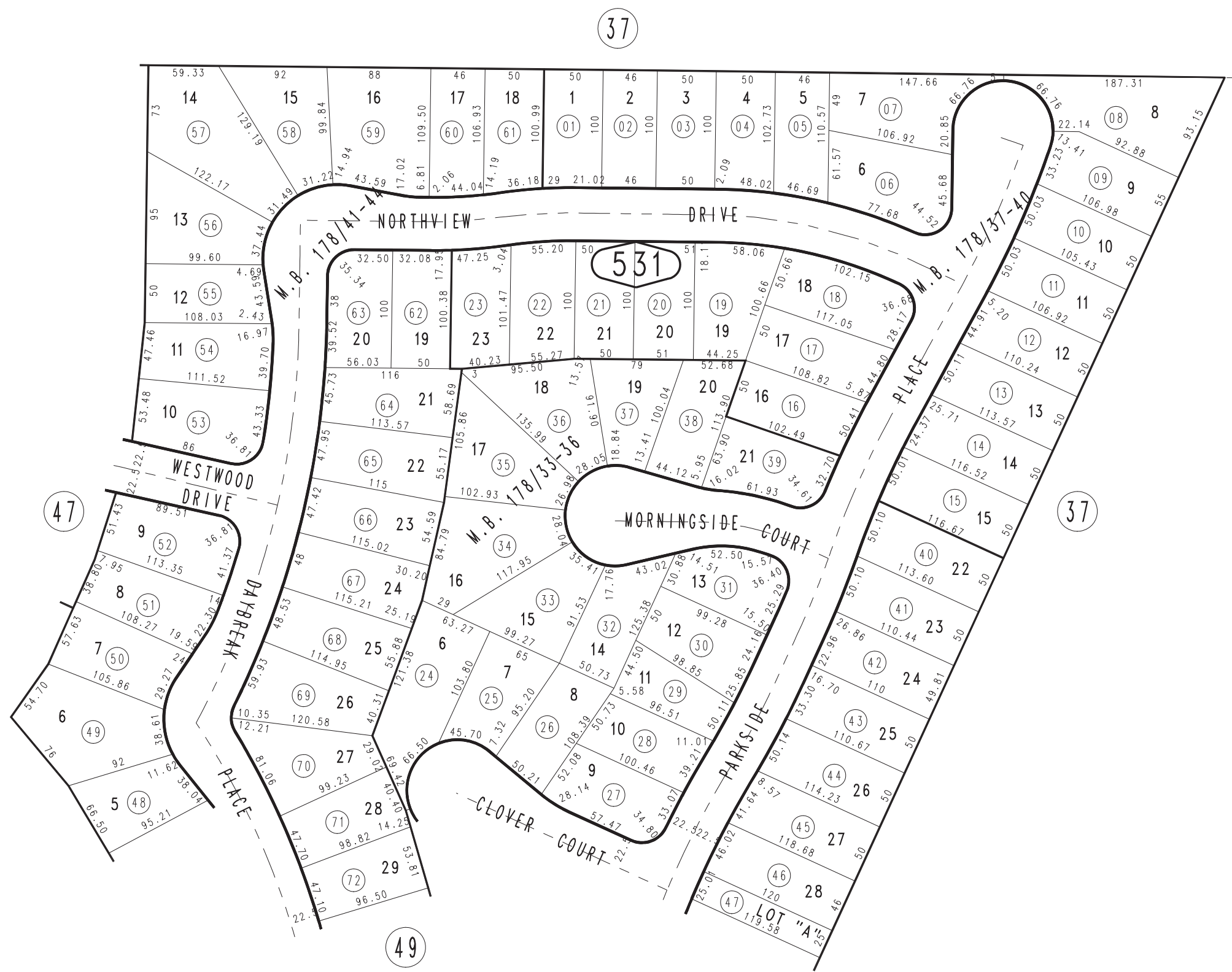


THIS MAP IS FOR THE PURPOSE
OF AD VALOREM TAXATION ONLY.

Tract No. 12590-3, M.B. 178/37-40

City of Rancho Cucamonga 1076 - 53
Tax Rate Area
15048



DEC 1988

Ptn. Tract No. 12590-4, M.B. 178/41-44
Ptn. Tract No. 12590-2, M.B. 178/33-36

Ptn. S. 1/2, Sec. 36
T.1N., R.7W.

Assessor's Map
Book 1076 Page 53
San Bernardino County

REVISED
12/06/88 AL
03/11/92 BLB