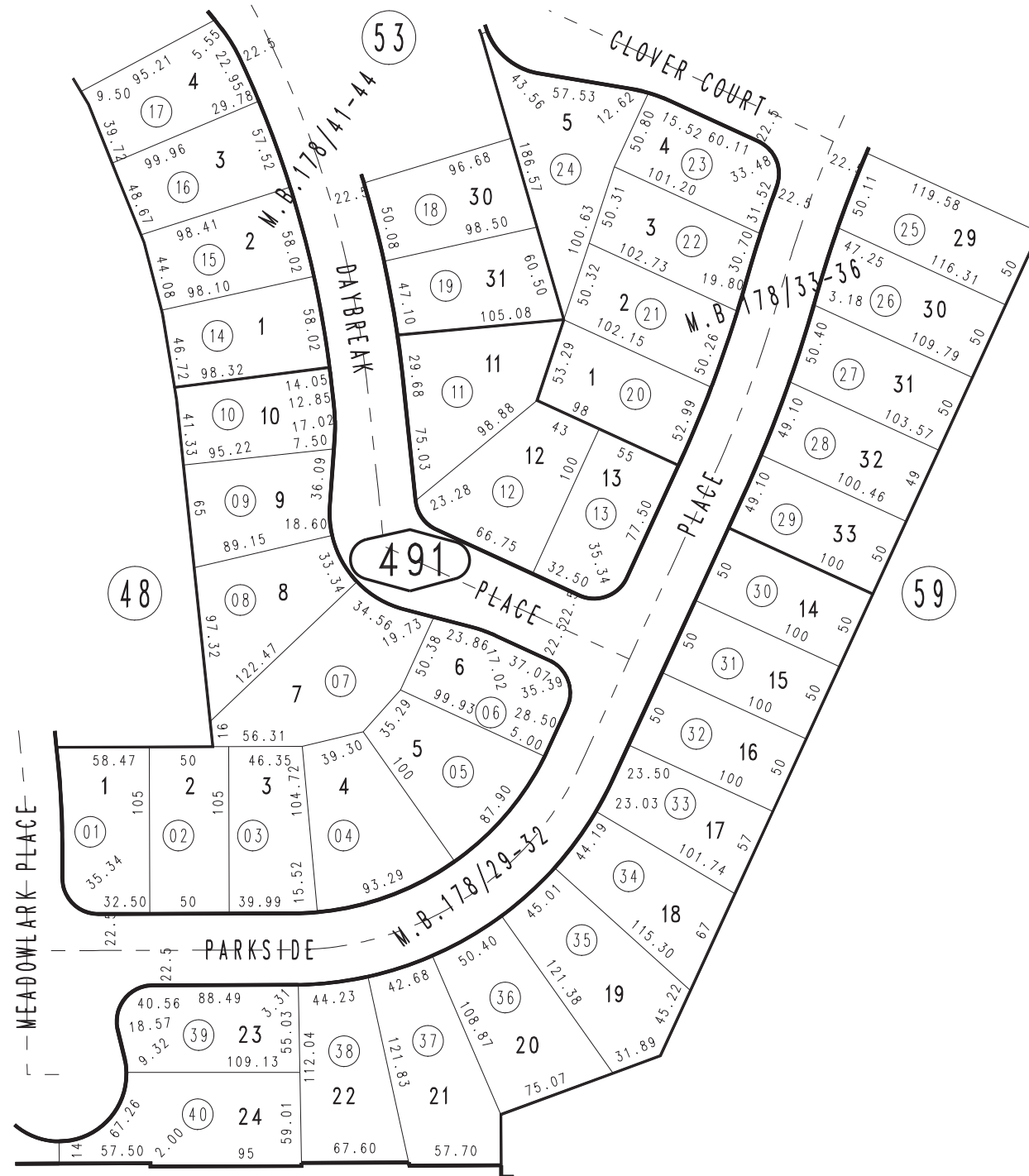


THIS MAP IS FOR THE PURPOSE
OF AD VALOREM TAXATION ONLY.

Ptn. Tract No. 12590-1, M.B. 178/29-32

City of Rancho Cucamonga 1076 - 49
Tax Rate Area
15048



--- ORIGINAL ---
--- BASELINE ---
--- ROAD ---
--- IMPROVEMENTS ---

1077
10

1077
11

NOV 1988

Ptn. Tract No. 12590-4, M.B. 178/41-44
Ptn. Tract No. 12590-2, M.B. 178/33-36

Ptn. S.1/2,S.W.1/4, Sec. 36
T.1N., R.7W.

Assessor's Map
Book 1076 Page 49
San Bernardino County

REVISED
07/28/11 LH-MC
08/04/11 LH-MC