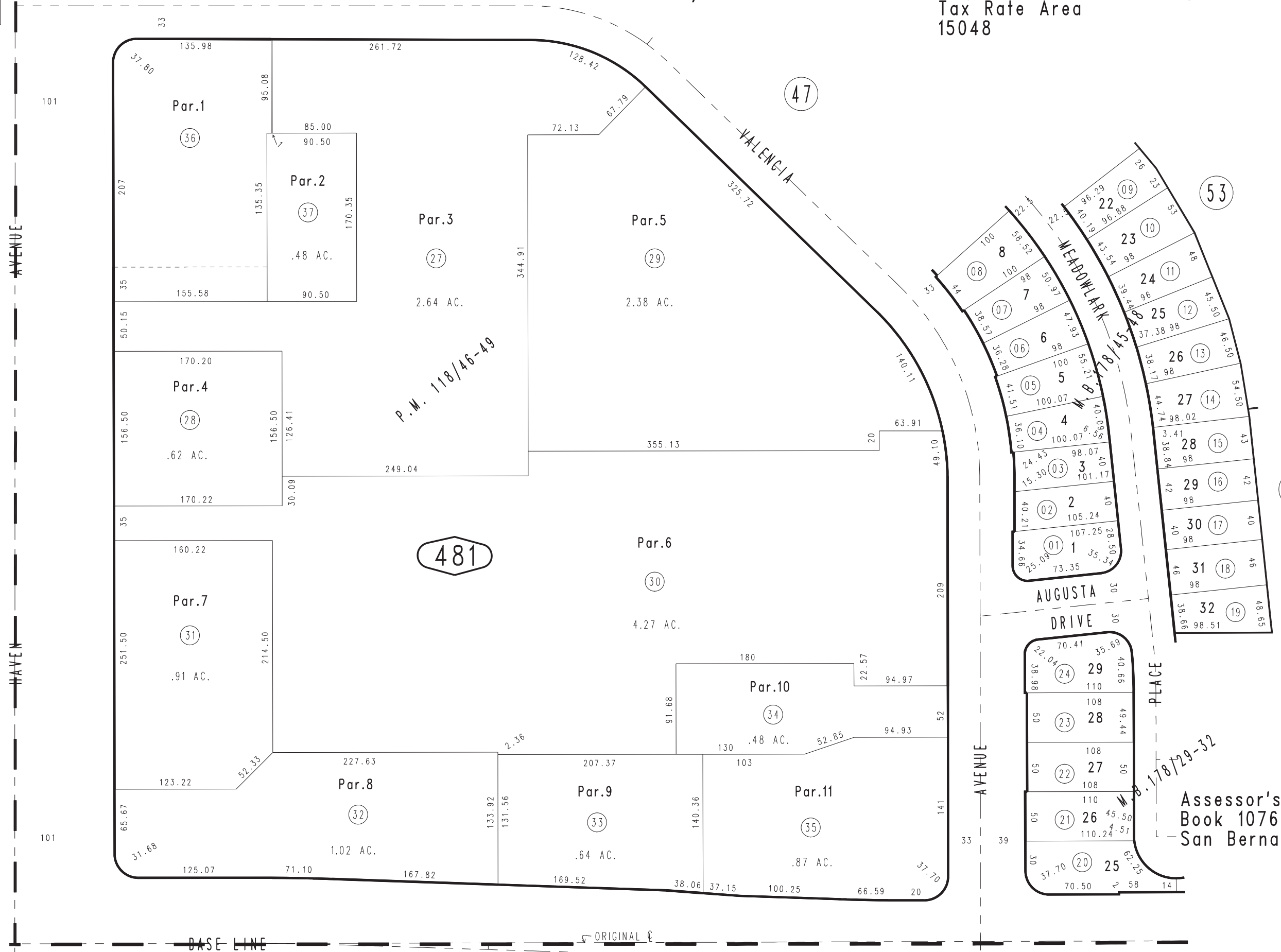


THIS MAP IS FOR THE PURPOSE OF AD VALOREM TAXATION ONLY.



Ptn. Tract No. 12590-1, M.B. 178/29-32

City of Rancho Cucamonga 1076 - 48
Tax Rate Area
15048



Parcel Map No. 9504, P.M. 118/46-49
Tract No. 12590-5, M.B. 178/45-48

1077
10

Ptn. S.1/2, S.W.1/4, Sec. 36
T.1N., R.7W.

Assessor's Map
Book 1076 Page 48
San Bernardino County

REVISED
07/03/19 KA