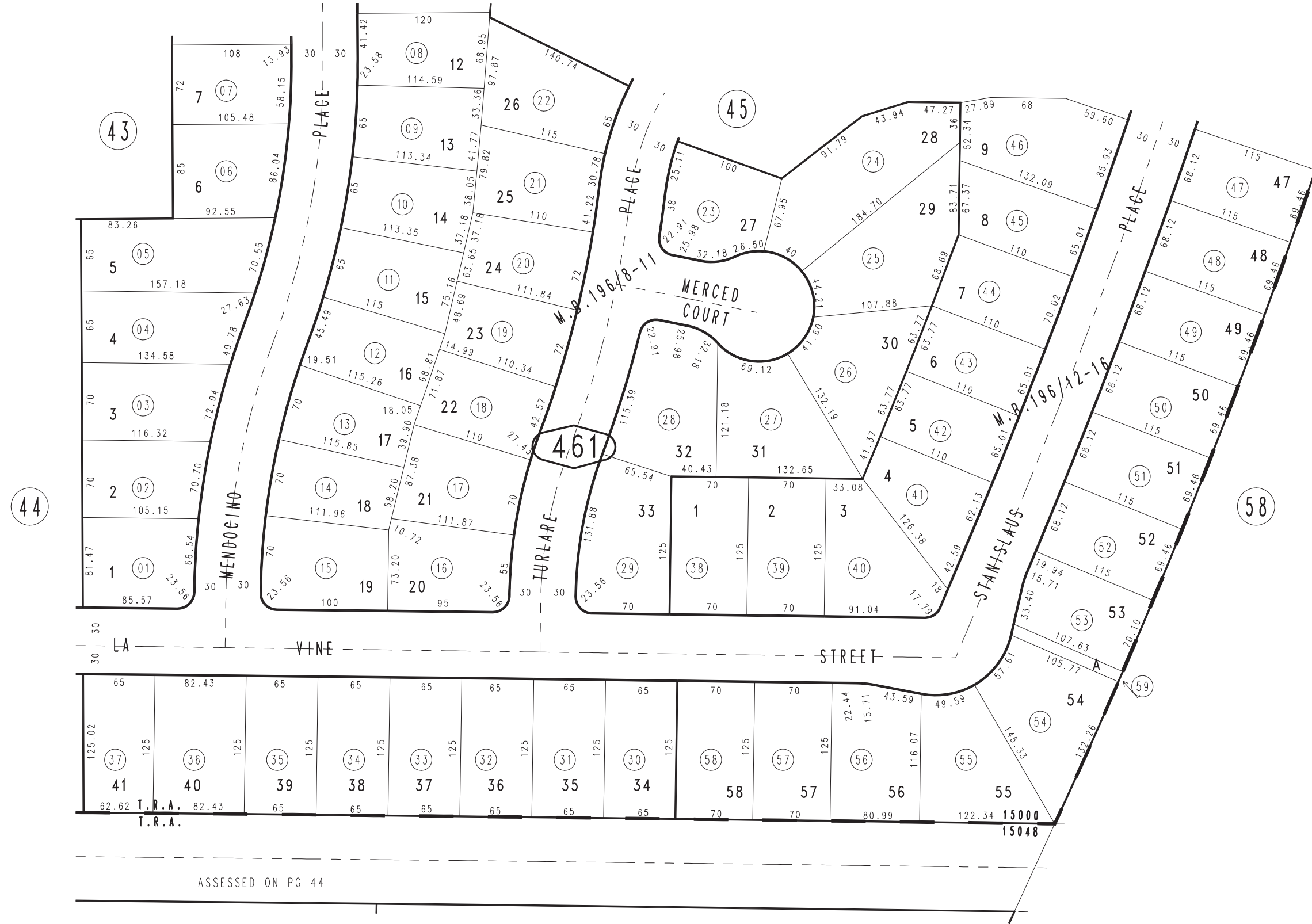


THIS MAP IS FOR THE PURPOSE OF AD VALOREM TAXATION ONLY.

Ptn. Tract No. 11606-1, M.B. 178/1-4, Amending Map, M.B. 196/8-11

City of Rancho Cucamonga 1076 - 46
Tax Rate Area 15000 15048



ASSESSED ON PG 44

Ptn. Tract No. 11606-2, M.B. 187/97-101, Amending Map M.B. 196/12-16

Ptn. S.1/2, Sec. 36
T.1N., R.7W.

Assessor's Map
Book 1076 Page 46
San Bernardino County

REVISED
04/18/11 RM
10/08/13 RM-MC