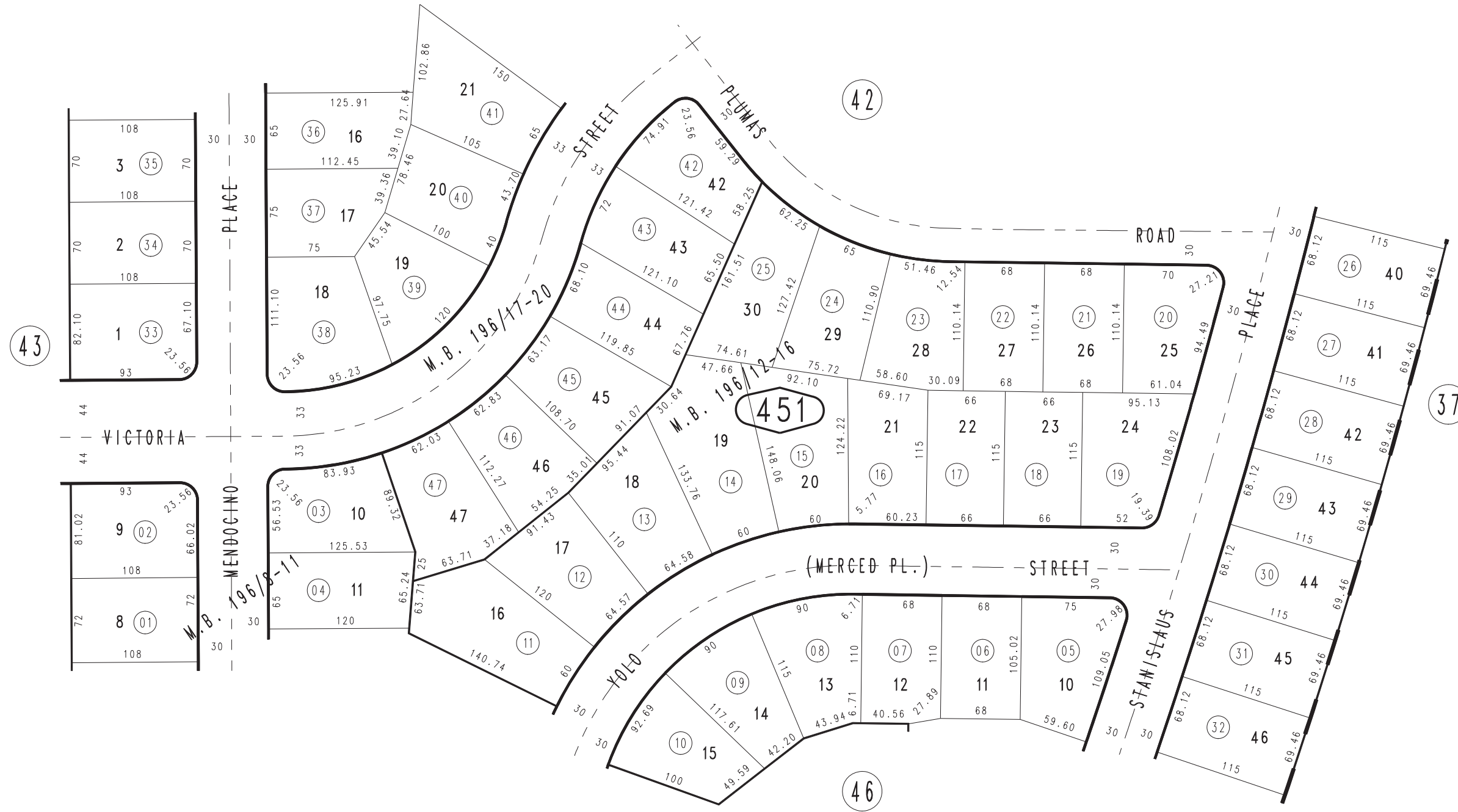


THIS MAP IS FOR THE PURPOSE
OF AD VALOREM TAXATION ONLY.

Ptn. Tract No. 11606-1, M.B. 178/1-4 Amending Map, M.B. 196/8-11

City of Rancho Cucamonga 1076 - 45
Tax Rate Area
15000



OCT 1988

Ptn. Tract No. 11606-3, M.B. 188/1-4, Amending Map, M.B. 196/17-20
Ptn. Tract No. 11606-2, M.B. 187/97-101, Amending Map, M.B. 196/12-16

Ptn. W. 1/2, Sec. 36
T.1N., R.7W.

Assessor's Map
Book 1076 Page 45
San Bernardino County

REVISED
06/16/10 LH-MC