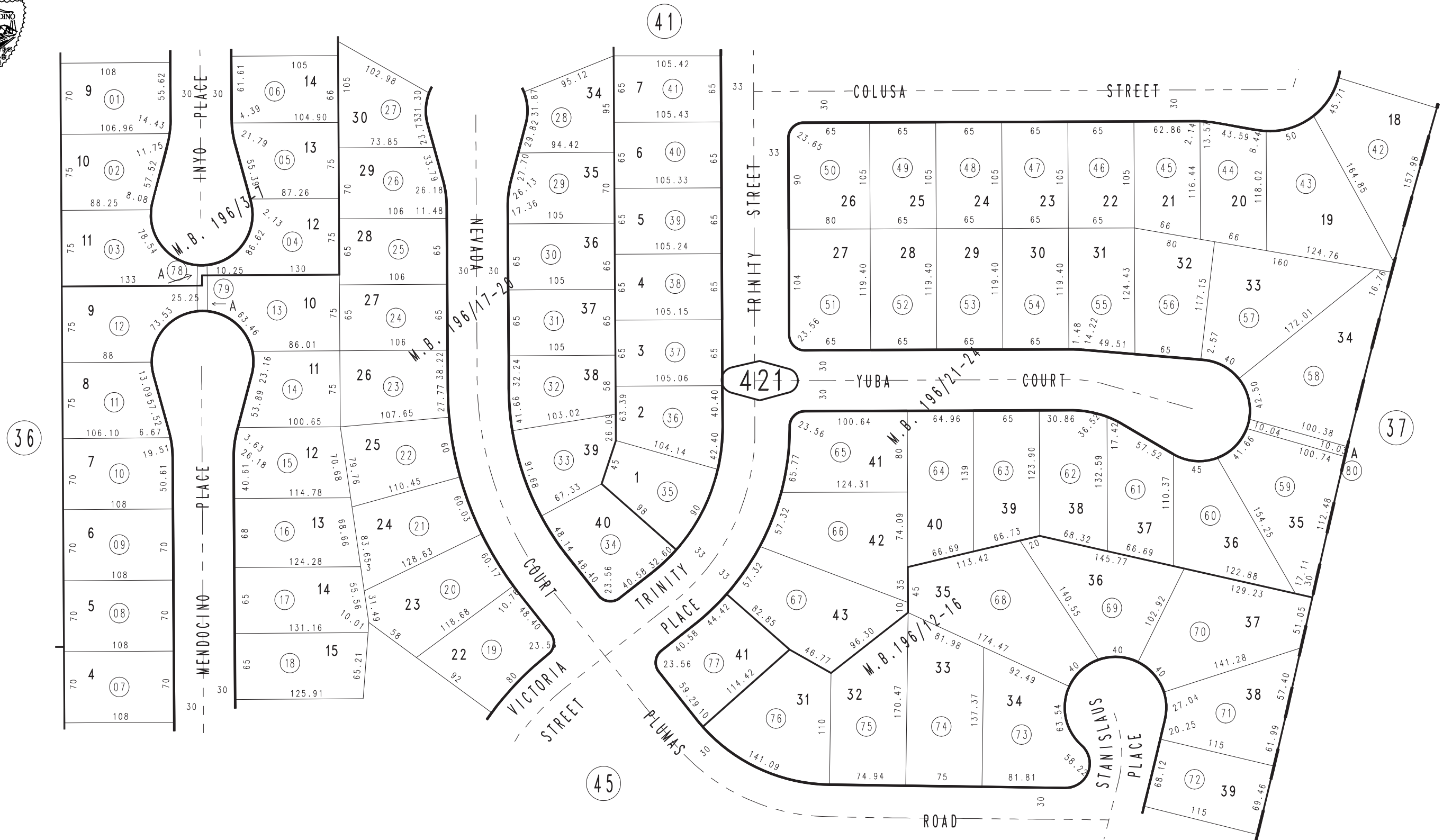


THIS MAP IS FOR THE PURPOSE
OF AD VALOREM TAXATION ONLY.

Ptn. Tract No. 11606, M.B. 187/92-96
Amending Map, M.B. 196/3-7

City of Rancho Cucamonga 1076 - 42
Tax Rate Area
15000



Ptn. Tract No. 11606-4, M.B. 188/5-8, Amending Map, M.B. 196/21-24
Ptn. Tract No. 11606-3, M.B. 188/1-4, Amending Map, M.B. 196/17-20
Ptn. Tract No. 11606-2, M.B. 187/97-101, Amending Map, M.B. 196/12-16

Ptn. N.W.1/4, Sec. 36
T.1N., R.7W.

Assessor's Map
Book 1076 Page 42
San Bernardino County

REVISED
06/16/10 LH-MC
04/18/11 RM