

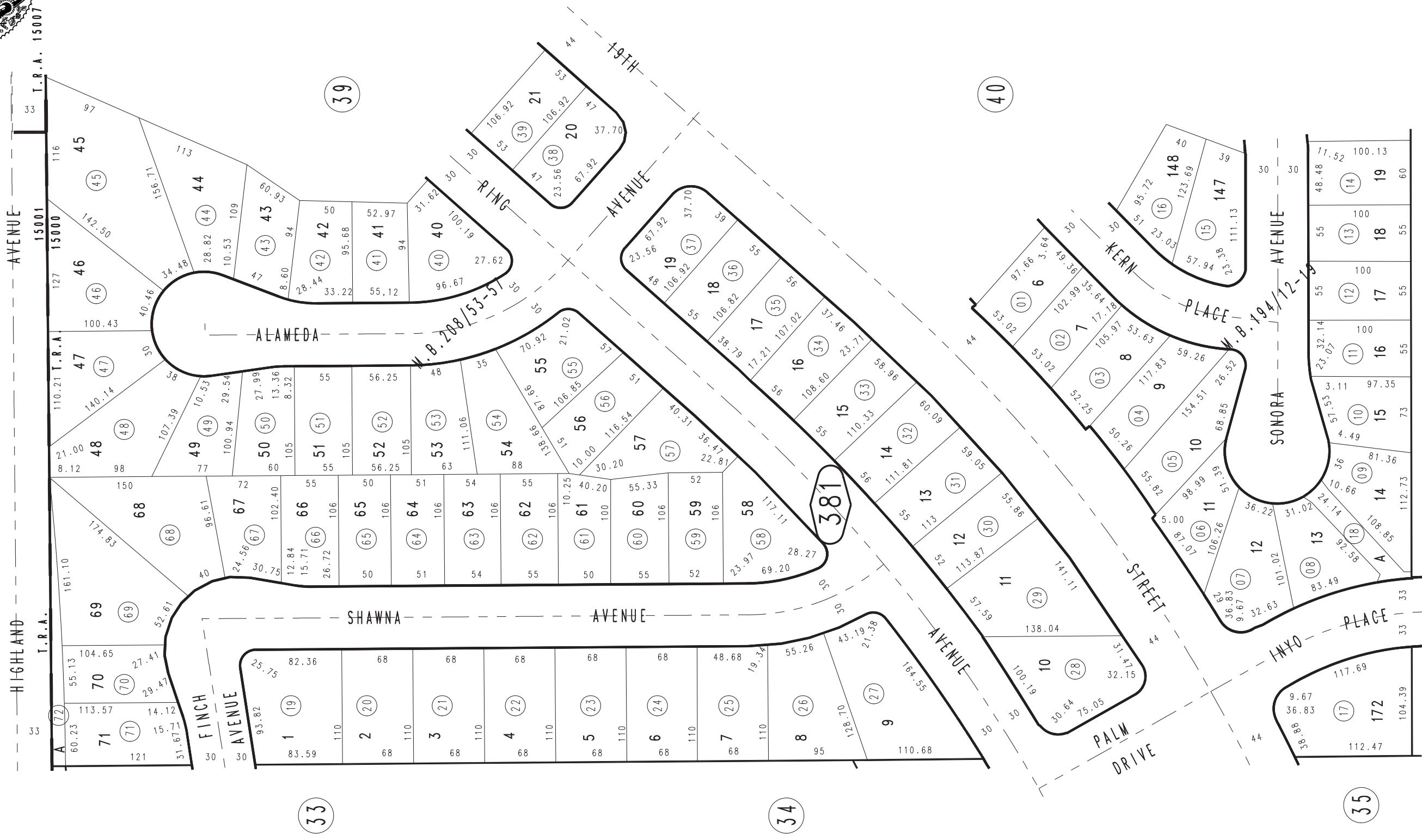
THIS MAP IS FOR THE PURPOSE OF AD VALOREM TAXATION ONLY.

Ptn. Tract No. 12952, M.B. 194/12-19

City of Rancho Cucamonga 1076 - 38
Tax Rate Area
15001,15007



0201
38



SEPT 1988

Ptn. Tract No. 13425, M.B. 208/53-57

Ptn. N.W. 1/4, Sec. 36
T.1N., R.7W.

Assessor's Map
Book 1076 Page 38
San Bernardino County

REVISED
06/7/10 LH-MC
08/04/11 LH-MC