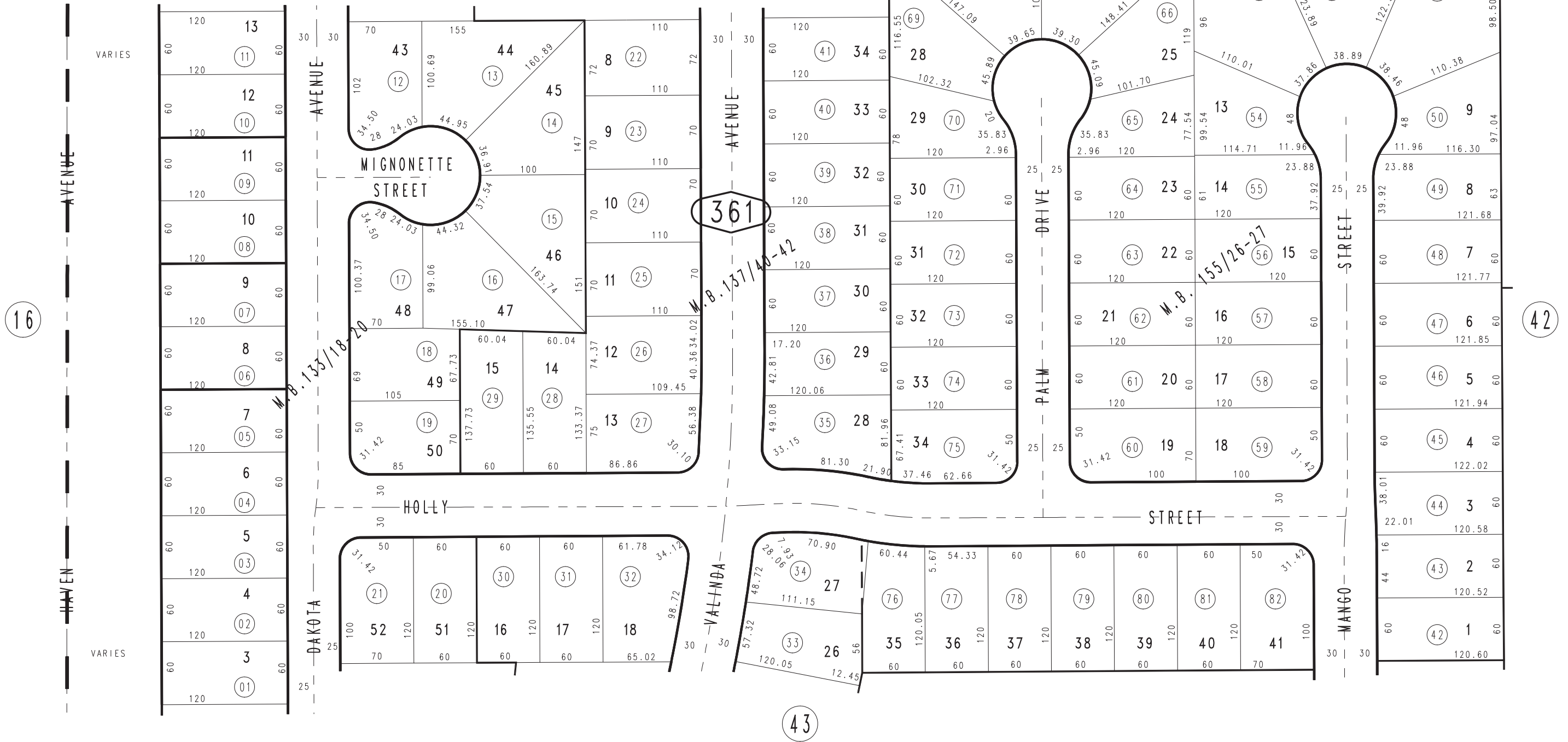


THIS MAP IS FOR THE PURPOSE OF AD VALOREM TAXATION ONLY.

Ptn. Tract No. 9432, M.B. 133/18-20

City of Rancho Cucamonga 1076 - 36
Tax Rate Area
15000



JULY 1988

Tract No. 9435, M.B. 155/26-27
Ptn. Tract No. 9433, M.B. 137/40-42

Ptn. N.W. 1/4, Sec. 36
T.1N., R.7W.

Assessor's Map
Book 1076 Page 36
San Bernardino County

REVISED
07/14/88 PE
05/24/05 BK