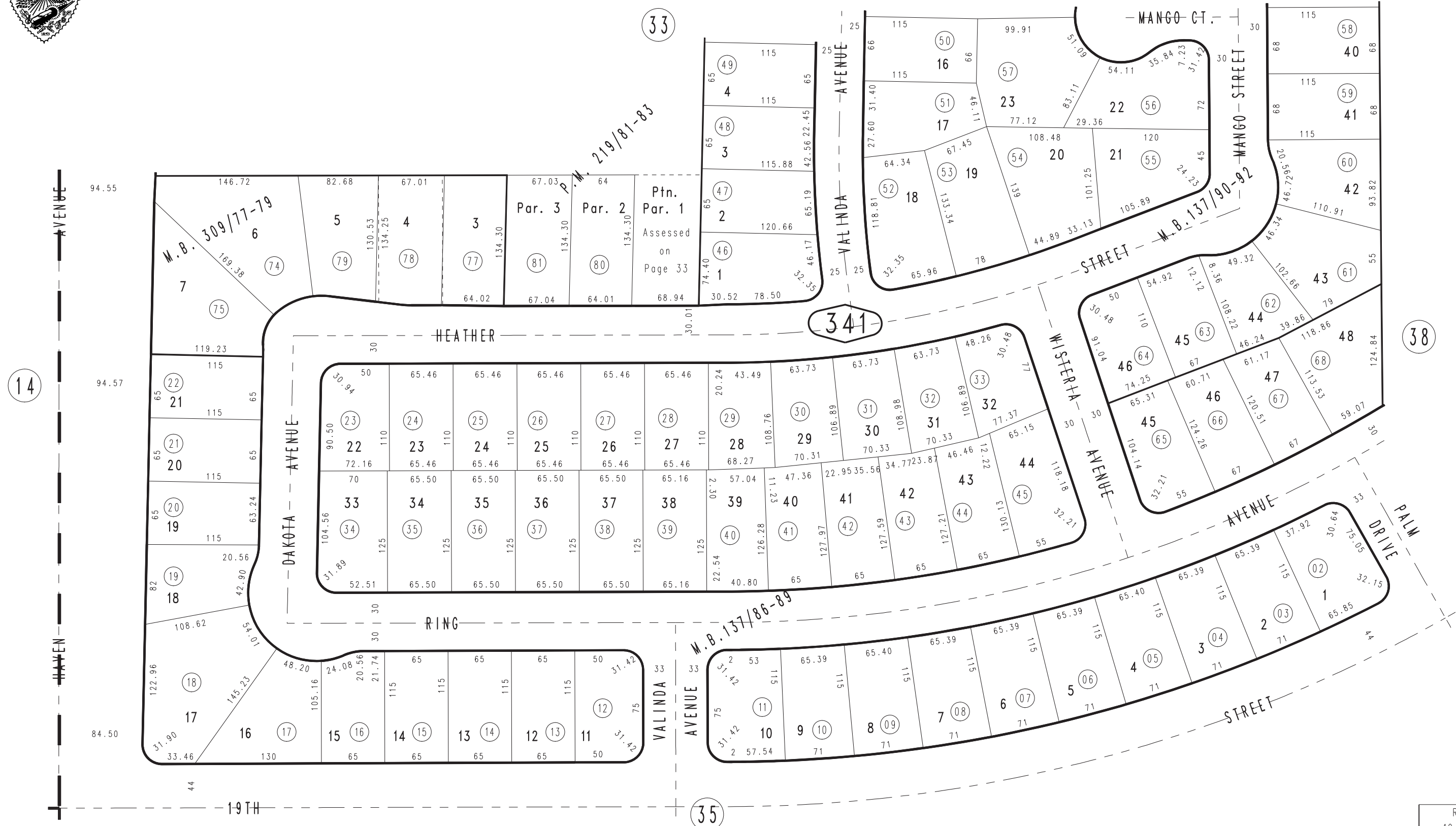


THIS MAP IS FOR THE PURPOSE OF AD VALOREM TAXATION ONLY.

Tract No. 9586, M.B. 137/86-89

City of Rancho Cucamonga 1076 - 34
Tax Rate Area
15000



Ptn. Parcel Map No. 18190, P.M. 219/81-83
 Ptn. Tract No. 16648, M.B. 309/77-79
 Ptn. Tract No. 9587, M.B. 137/90-92

Ptn. N.W. 1/4, Sec. 36
 T.1N., R.7W.

Assessor's Map
 Book 1076 Page 34
 San Bernardino County

REVISED
 10/29/05 RU
 05/25/07 LH
 05/29/07 LH