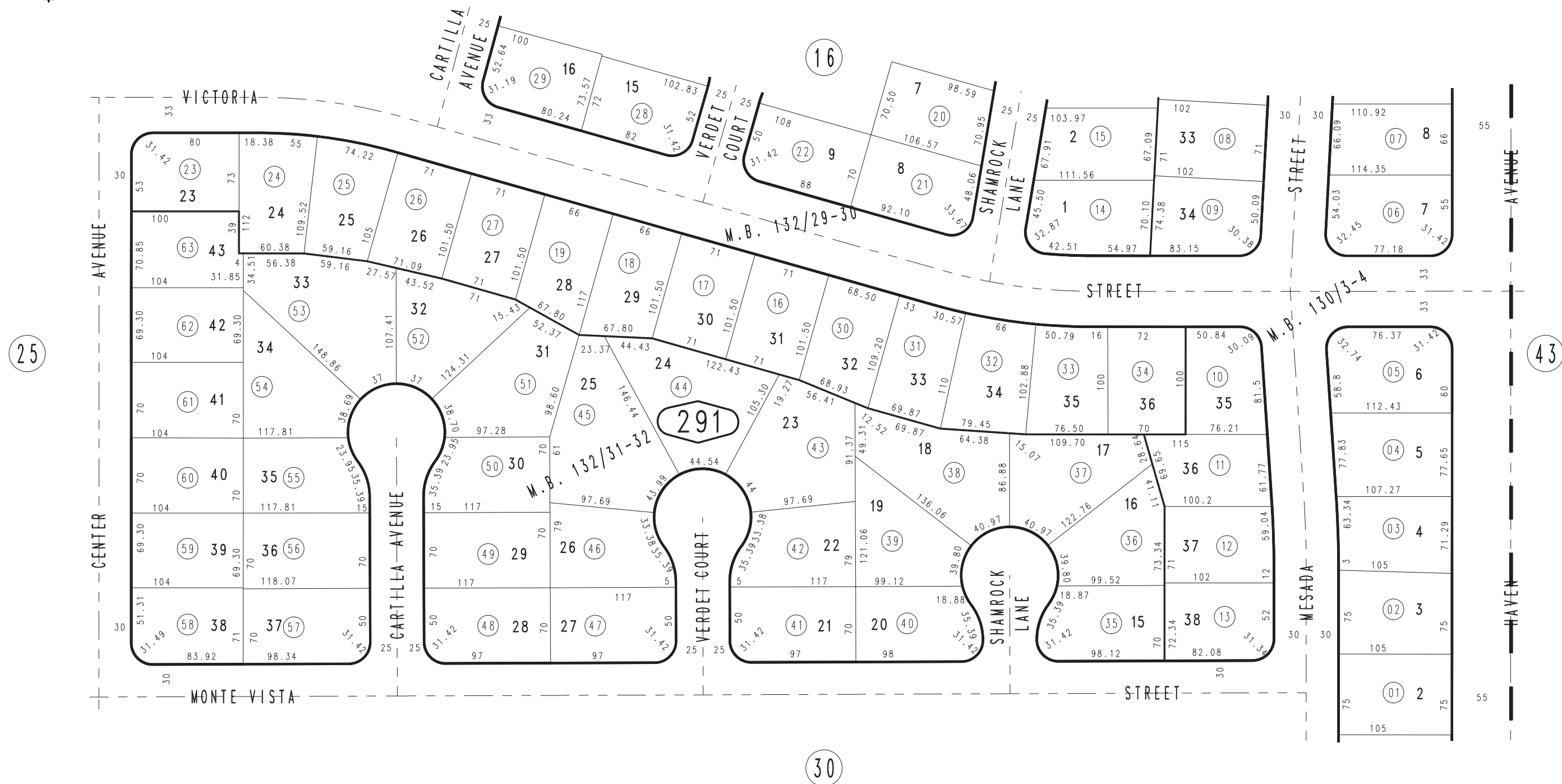


THIS MAP IS FOR THE PURPOSE OF AD VALOREM TAXATION ONLY.

Ptn. Tract No. 9245, M.B. 130/3-4

City of Rancho Cucamonga
Tax Rate Area
15006

1076 - 29



JUNE 1988

Ptn. Tract No. 9344, M.B. 132/31-32
Ptn. Tract No. 9343, M.B. 132/29-30

Ptn. S.E. 1/4, Sec. 35
T.1N., R.7W.

Assessor's Map
Book 1076 Page 29
San Bernardino County

REVISED
06/07/88 PE