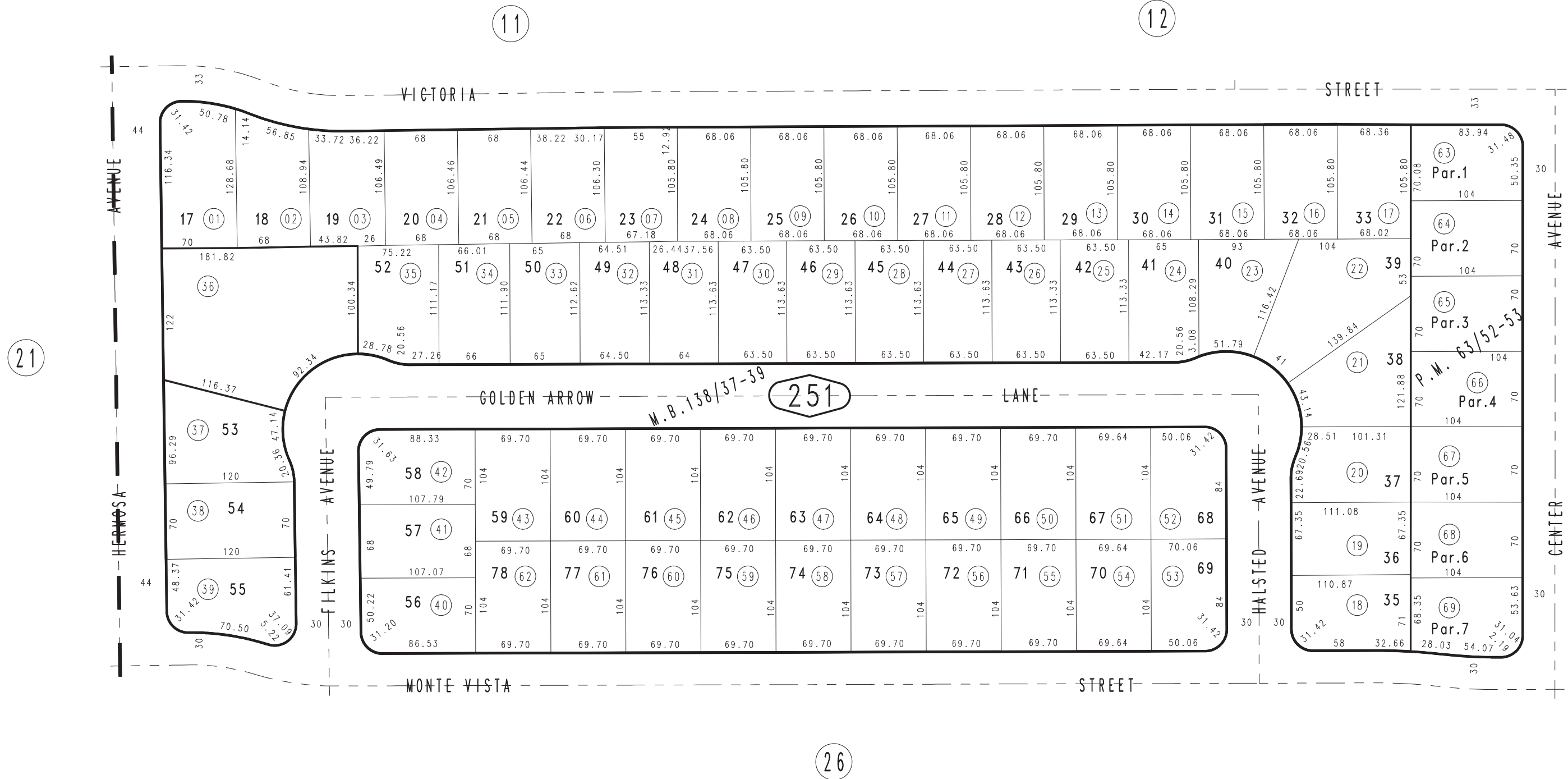


THIS MAP IS FOR THE PURPOSE
OF AD VALOREM TAXATION ONLY.

Ptn. N.W.1/4, S.W.1/4, Sec. 35, T.1N., R.7W., S.B.M.

City of Rancho Cucamonga
Tax Rate Area
15006

1076 - 25



21

29

26

JUNE 1988

Parcel Map No. 5703, P.M. 63/52-53
Ptn. Tract No. 9305, M.B. 138/37-39

Assessor's Map
Book 1076 Page 25
San Bernardino County

REVISED
06/15/10 LH-MC