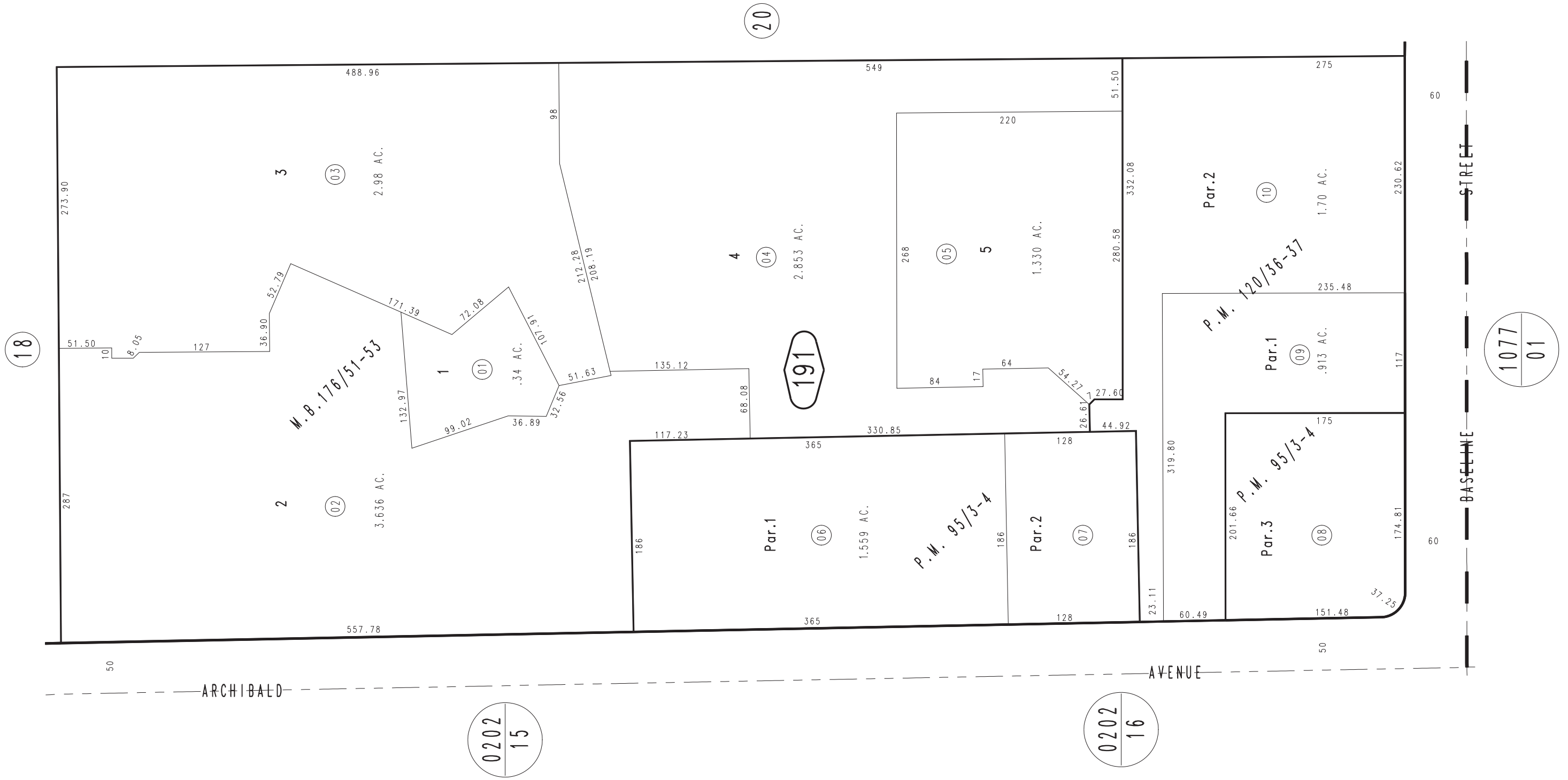


THIS MAP IS FOR THE PURPOSE  
OF AD VALOREM TAXATION ONLY.

# Tract No. 11797, M.B. 171/55-57 Amending Map, M.B. 176/51-53

City of Rancho Cucamonga 1076 - 19  
Tax Rate Area  
15004



MAY 1988

Parcel Map No. 10884, P.M. 120/36-37  
Ptn. Parcel Map No. 9079, P.M. 95/3-4

Ptn. S.W. 1/4, Sec. 35  
T.1N., R.7W.

Assessor's Map  
Book 1076 Page 19  
San Bernardino County

REVISED  
05/25/88 PE