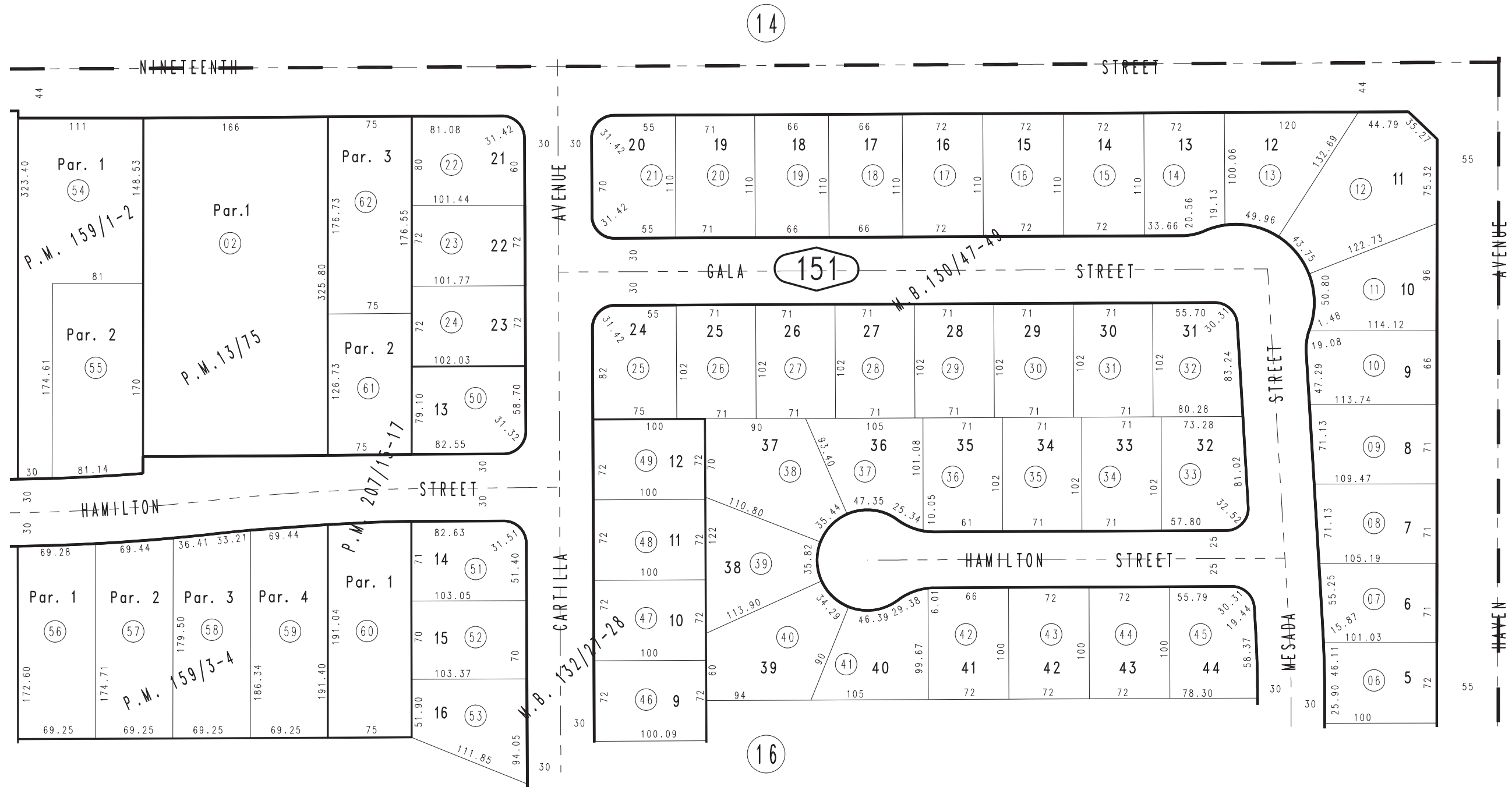


THIS MAP IS FOR THE PURPOSE OF AD VALOREM TAXATION ONLY.

Ptn. Parcel Map No. 1519, P.M. 13/75

City of Rancho Cucamonga
Tax Rate Area
15006

1076 - 15



Parcel Map No. 16481, P.M. 207/15-17
 Parcel Map No. 11473, P.M. 159/3-4
 Parcel Map No. 11472, P.M. 159/1-2
 Ptn. Tract No. 9345, M.B. 132/27-28
 Ptn. Tract No. 9121, M.B. 130/47-49

MAY 1988

Ptn. N.E. 1/4, Sec. 35
 T.1N., R.7W.

Assessor's Map
 Book 1076 Page 15
 San Bernardino County

REVISED
 02/23/10 LH