

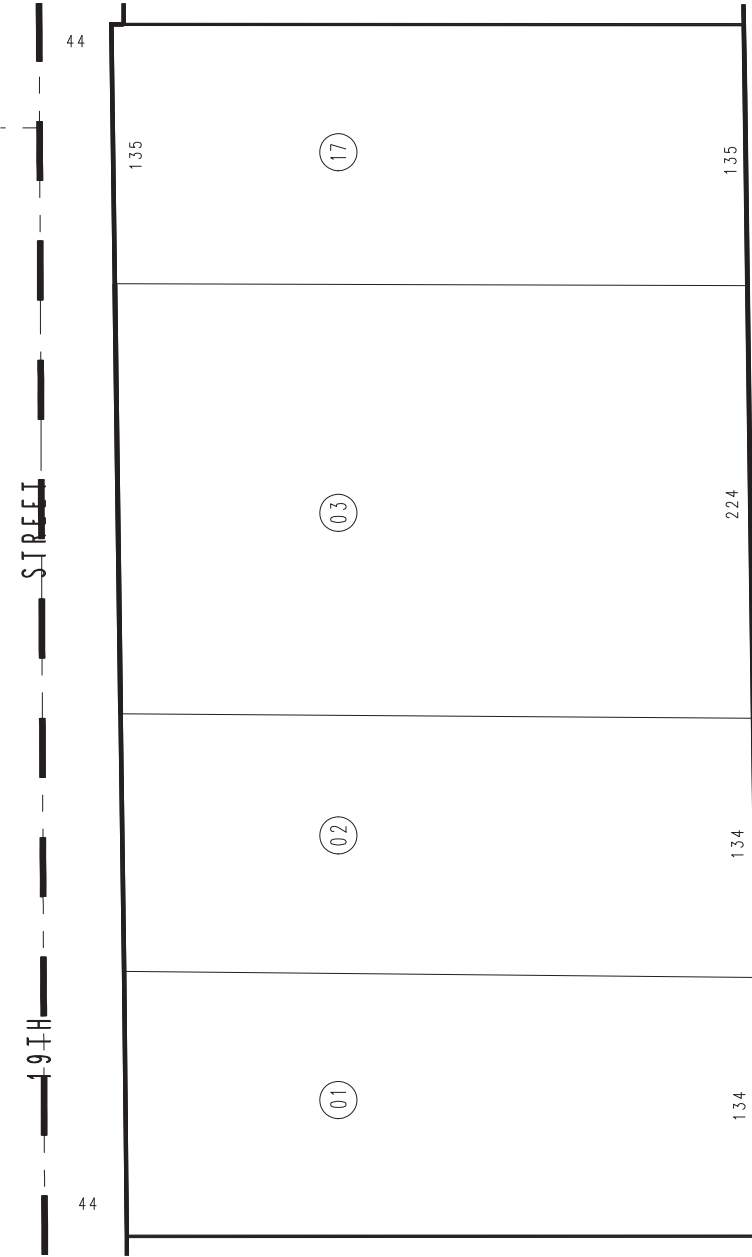
THIS MAP IS FOR THE PURPOSE  
OF AD VALOREM TAXATION ONLY.

Ptn. N.1/2, E.1/2, Sec. 35, T.1N., R.7W., S.B.M.

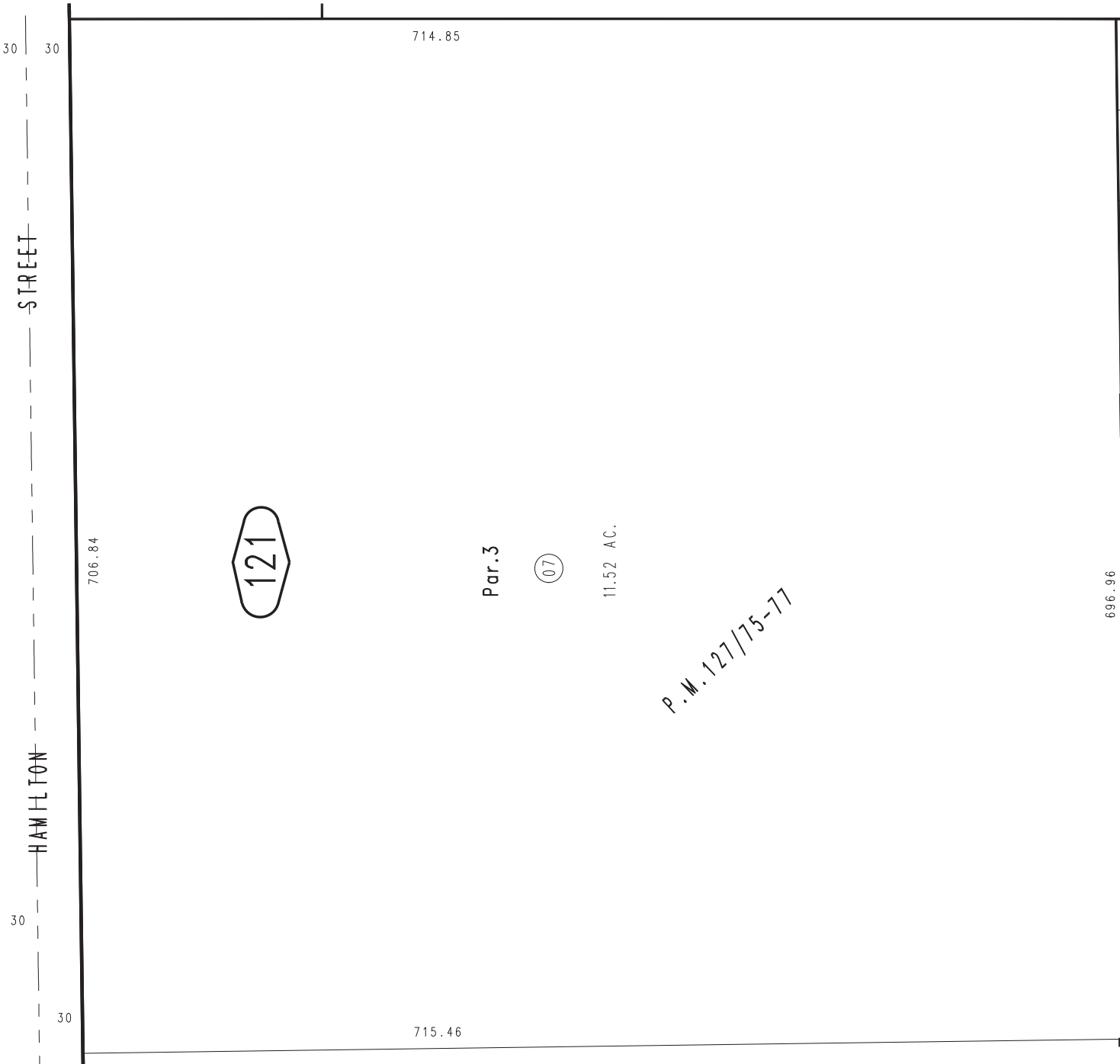
City of Rancho Cucamonga 1076 - 12  
Tax Rate Area  
15004



10



15



16

11



25

MAY 1988

Ptn. Tract No. 9305, M.B. 138/37-39  
Ptn. Parcel Map No. 9986, P.M. 127/75-77

Assessor's Map  
Book 1076 Page 12  
San Bernardino County

REVISED  
02/23/10 LH