

THIS MAP IS FOR THE PURPOSE OF AD VALOREM TAXATION ONLY.

Ptn. N.E.1/4, Sec. 35, T.1N., R.7W.

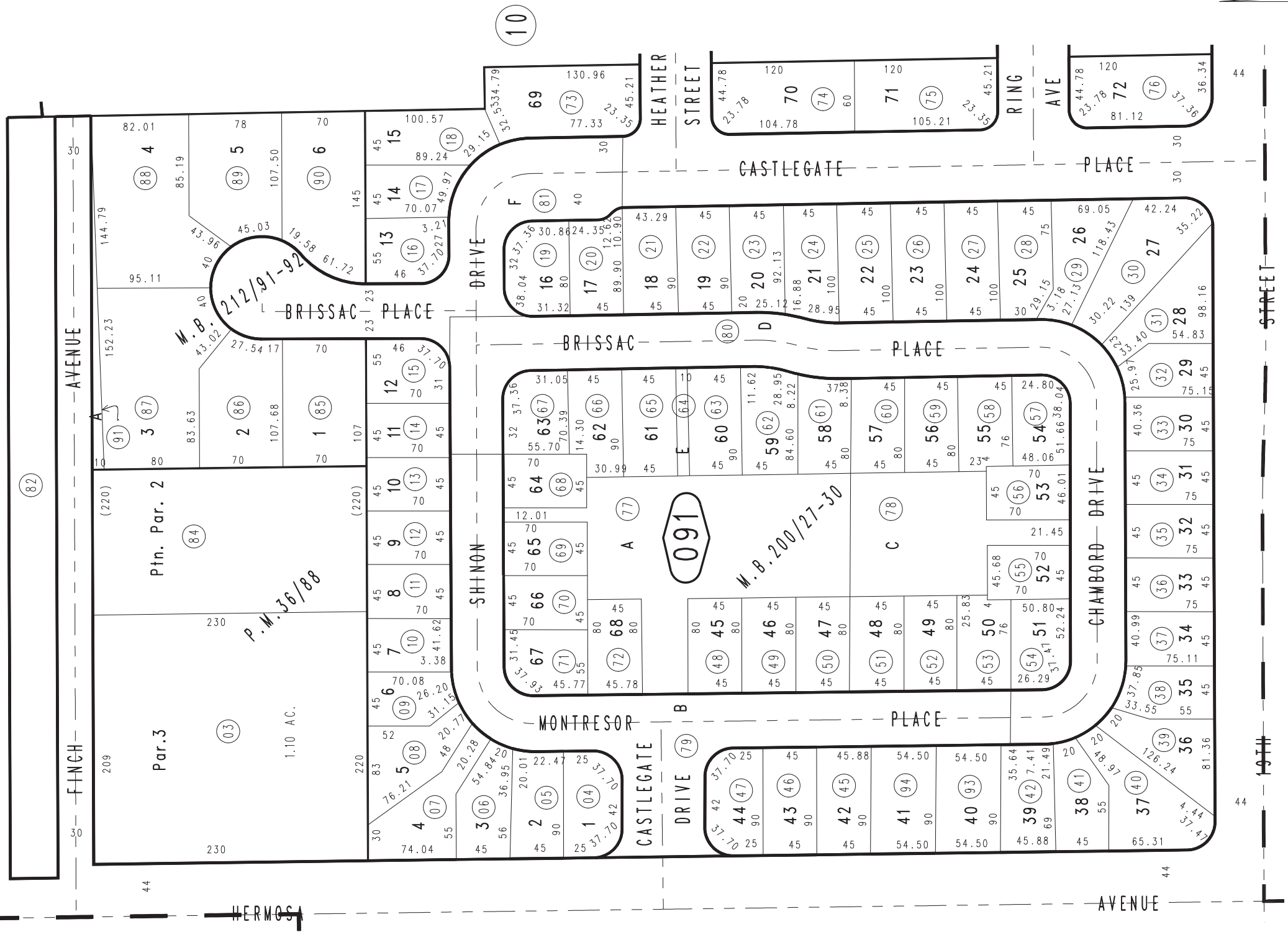
City of Rancho Cucamonga 1076 - 09  
Tax Rate Area  
15001,15004



0201  
26

HIGHLAND AVENUE  
T.R.A. 15001  
T.R.A. 15004

STATE HIGHWAY



11

MAY 1988

Tract No. 13825, M.B. 212/91-92  
Tract No. 13342, M.B. 200/27-30  
Ptn. Parcel Map No. 3334, P.M. 36/88

Assessor's Map  
Book 1076 Page 09  
San Bernardino County

REVISED  
06/9/10 LH-MC