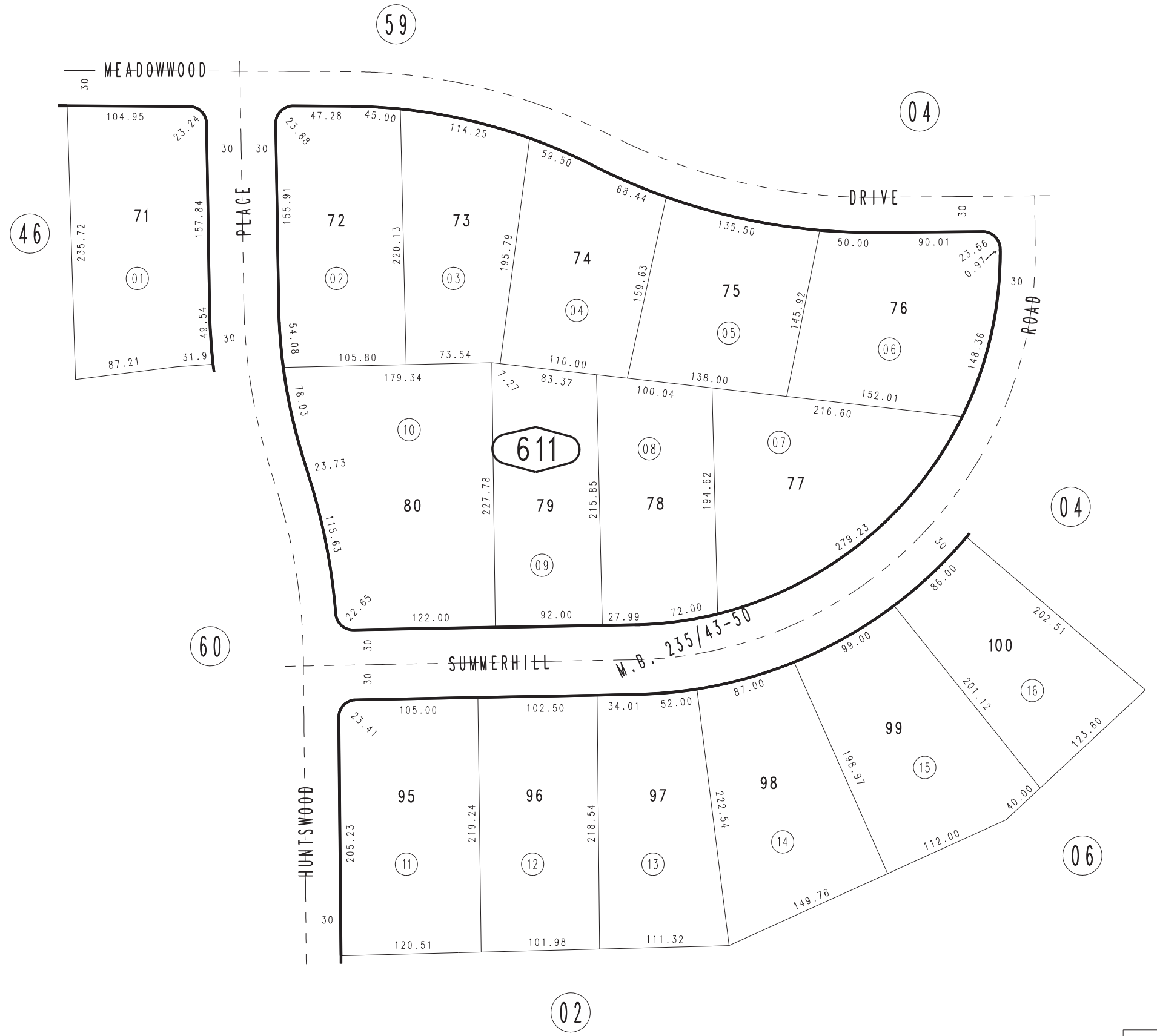


THIS MAP IS FOR THE PURPOSE
OF AD VALOREM TAXATION ONLY.

Ptn. Tract No. 13316, M.B. 235/43-50

City of Rancho Cucamonga
Tax Rate Area
15102

1074 - 61



JULY 1990

Ptn. N. 1/2, Sec. 23
T.1N., R.7W.

Assessor's Map
Book 1074 Page 61
San Bernardino County

REVISED
07/08/90 NP