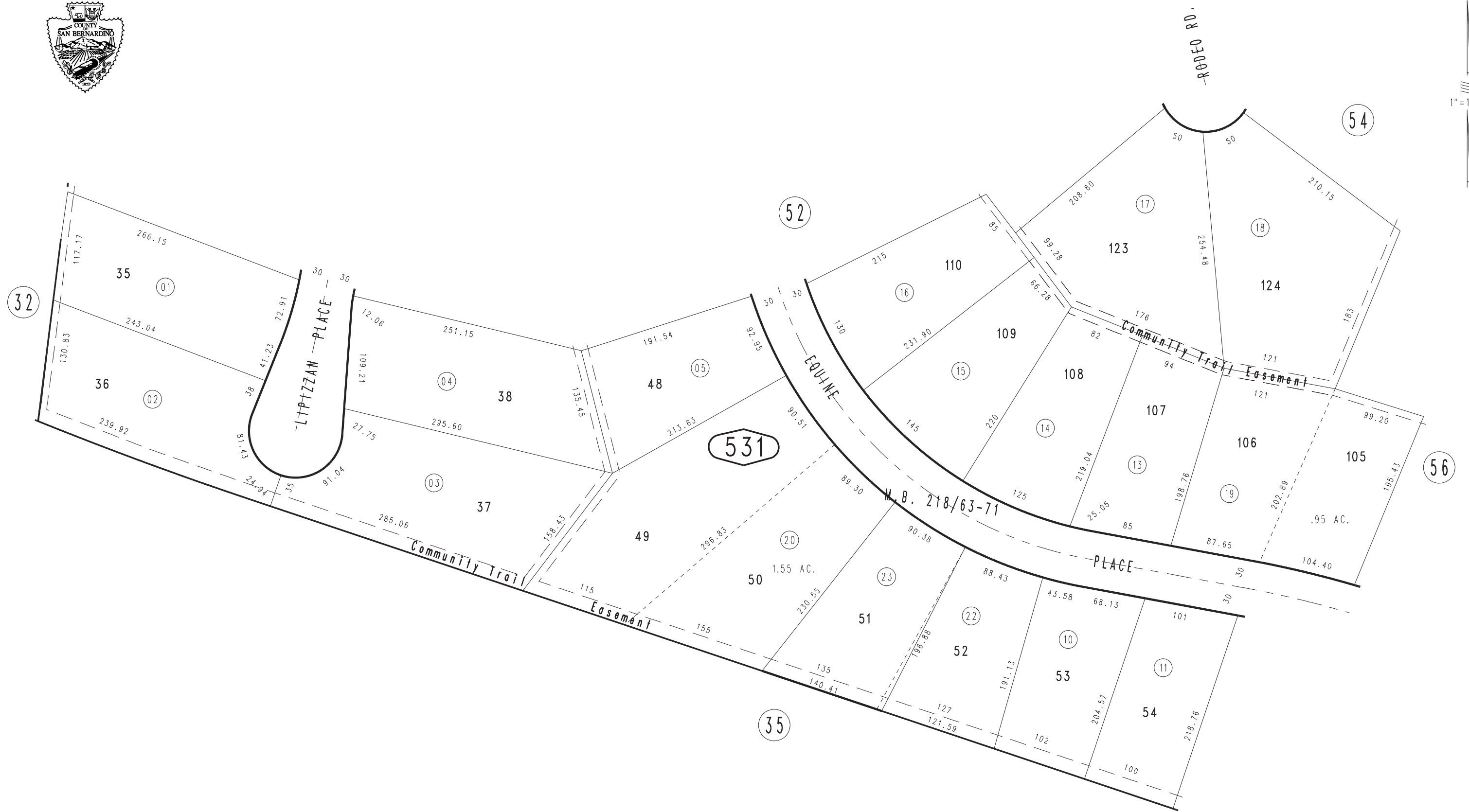


THIS MAP IS FOR THE PURPOSE  
OF AD VALOREM TAXATION ONLY.

Ptn. Tract No. 12332-2, M.B. 218/63-71

City of Rancho Cucamonga 1074 - 53  
Tax Rate Area  
15001



MAR. 1989

Ptn. N. 1/2, Sec. 24  
T.1N., R.7W.

Assessor's Map  
Book 1074 Page 53  
San Bernardino County

REVISED  
09/27/24 XM  
10/24/24 XM