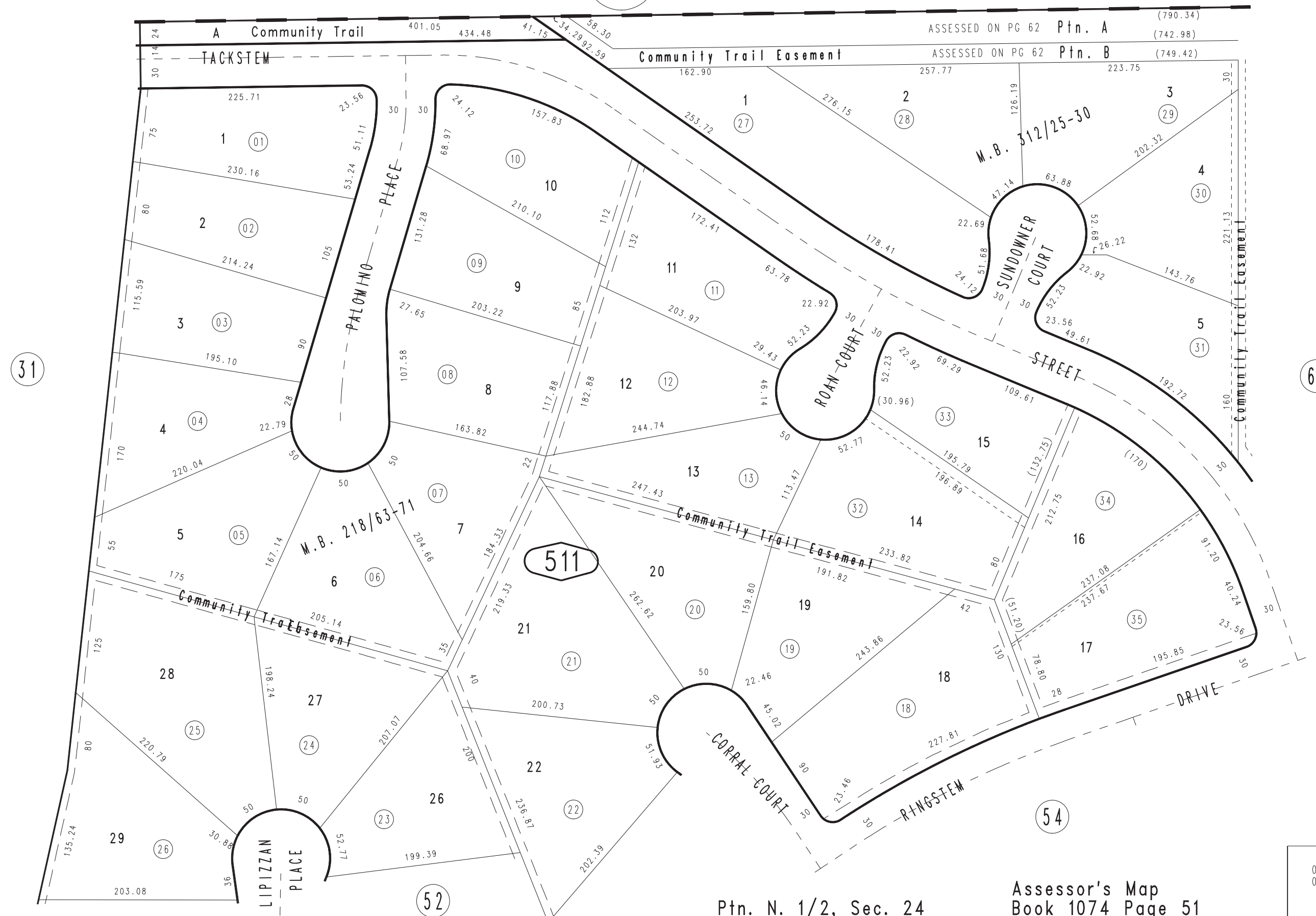


THIS MAP IS FOR THE PURPOSE OF AD VALOREM TAXATION ONLY.

Ptn. Tract No. 12332-2, M.B. 218/63-71

City of Rancho Cucamonga 1074 - 51  
Tax Rate Area  
15001

0201  
28



MAR. 1989

Ptn. Tract No. 14771, M.B. 266/48-53, Amending Map M.B. 312/25-30

Ptn. N. 1/2, Sec. 24  
T.1N., R.7W.

Assessor's Map  
Book 1074 Page 51  
San Bernardino County

REVISED  
01/09/09 GW  
06/15/09 LH