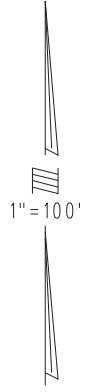
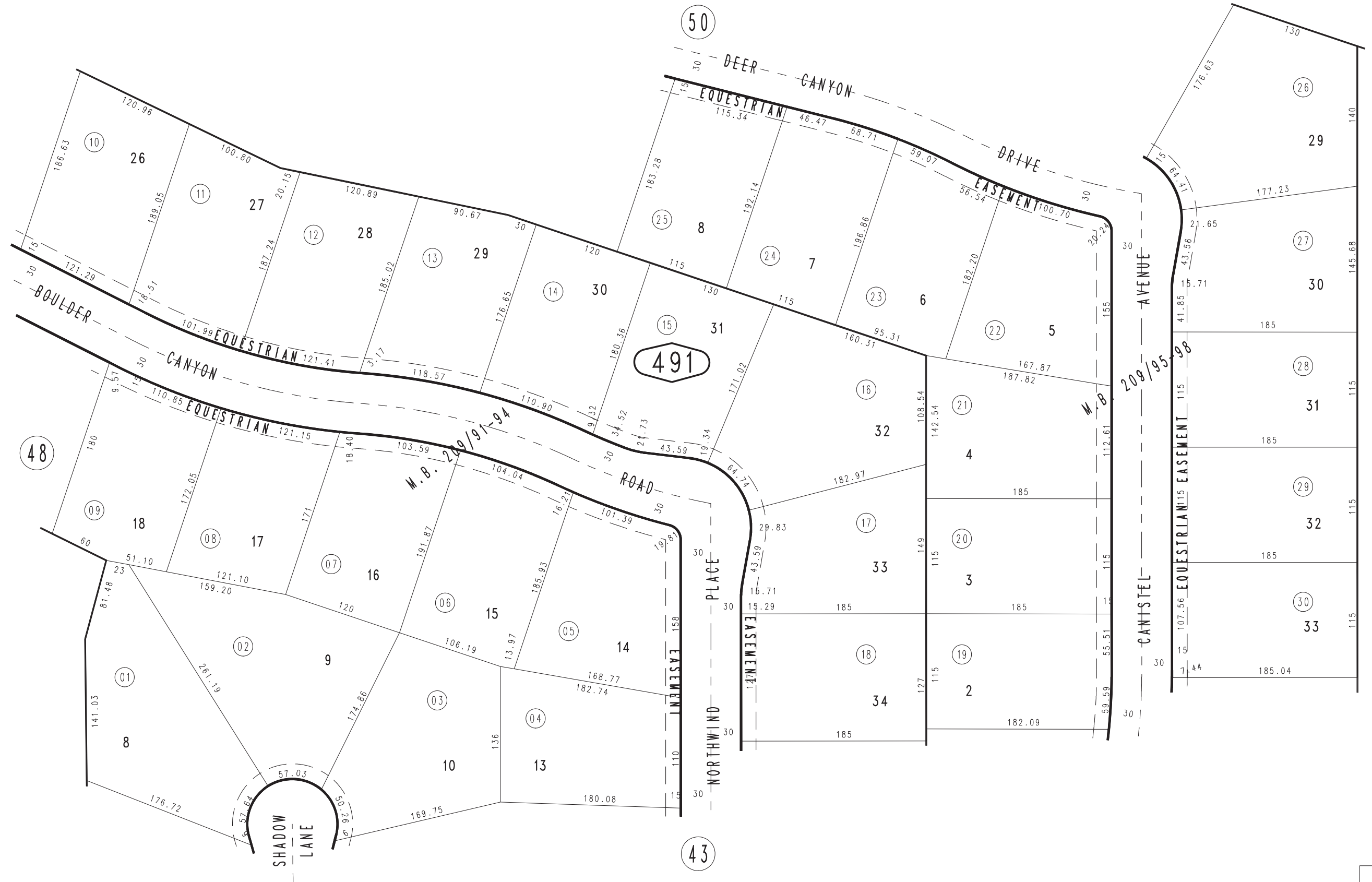


THIS MAP IS FOR THE PURPOSE
OF AD VALOREM TAXATION ONLY.

Ptn. Tract No. 12650-4, M.B. 209/91-94

City of Rancho Cucamonga 1074 - 49
Tax Rate Area
15001



MAY 1988

Ptn. Tract No. 12650, M.B. 209/95-98

Ptn. S. 1/2, Sec. 24
T.1N., R.7W.

Assessor's Map
Book 1074 Page 49
San Bernardino County

REVISED
01/18/89 BLB
02/22/90 PE