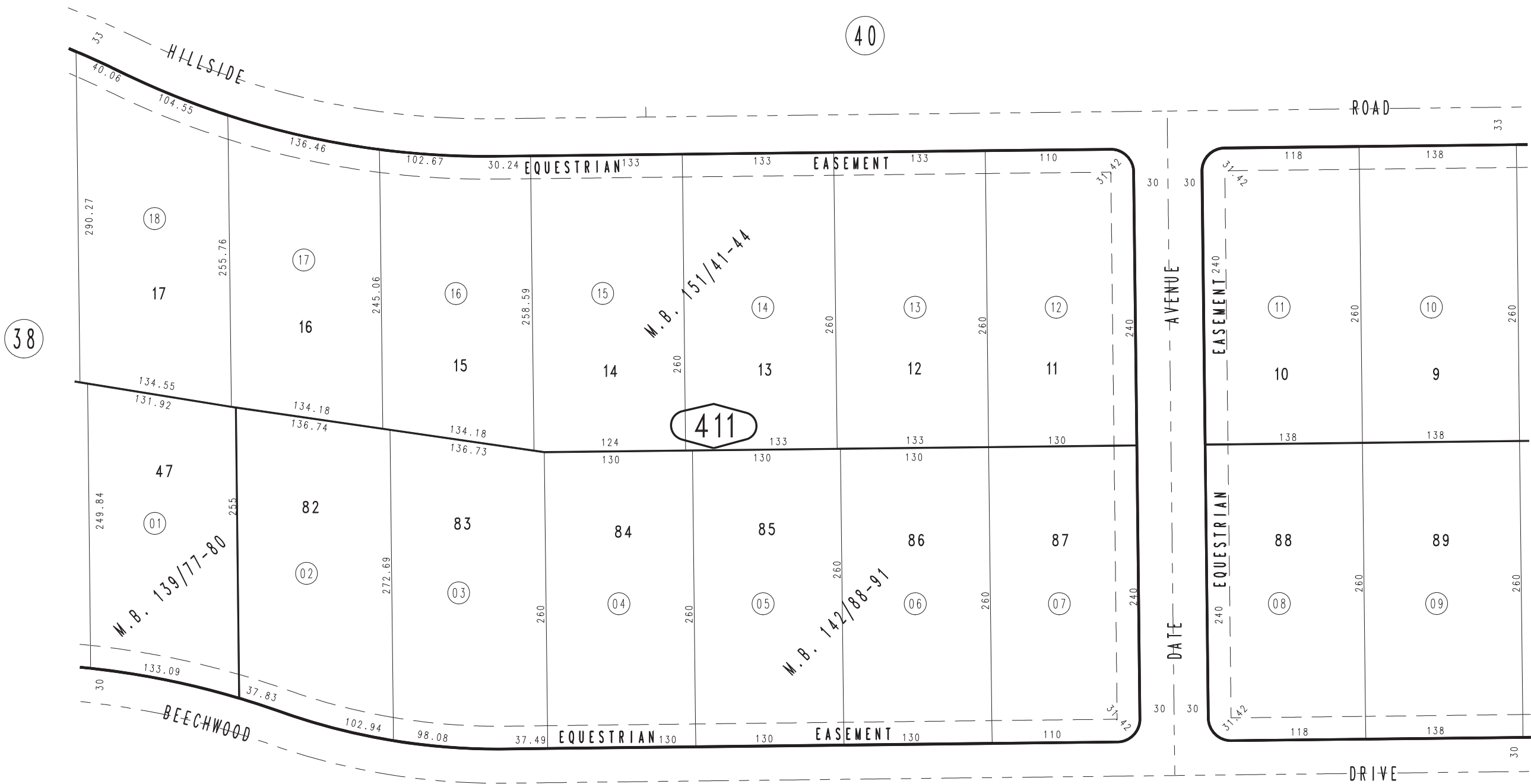


THIS MAP IS FOR THE PURPOSE
OF AD VALOREM TAXATION ONLY.

Ptn. Tract No. 9582-1, M.B. 137/73-76
Amending Map, M.B. 139/77-80

City of Rancho Cucamonga 1074 - 41
Tax Rate Area
15001



APR. 1988

Ptn. Tract No. 9583, M.B. 151/41-44
Ptn. Tract No. 9582-2, M.B. 142/88-91

Ptn. S.W. 1/4, Sec. 24
T.1N., R.7W.

Assessor's Map
Book 1074 Page 41
San Bernardino County

REVISED
04/29/88 NP