

THIS MAP IS FOR THE PURPOSE OF AD VALOREM TAXATION ONLY.

Ptn. Tract No. 12650-1, M.B. 183/49-53

City of Rancho Cucamonga 1074 - 36
Tax Rate Area
15001



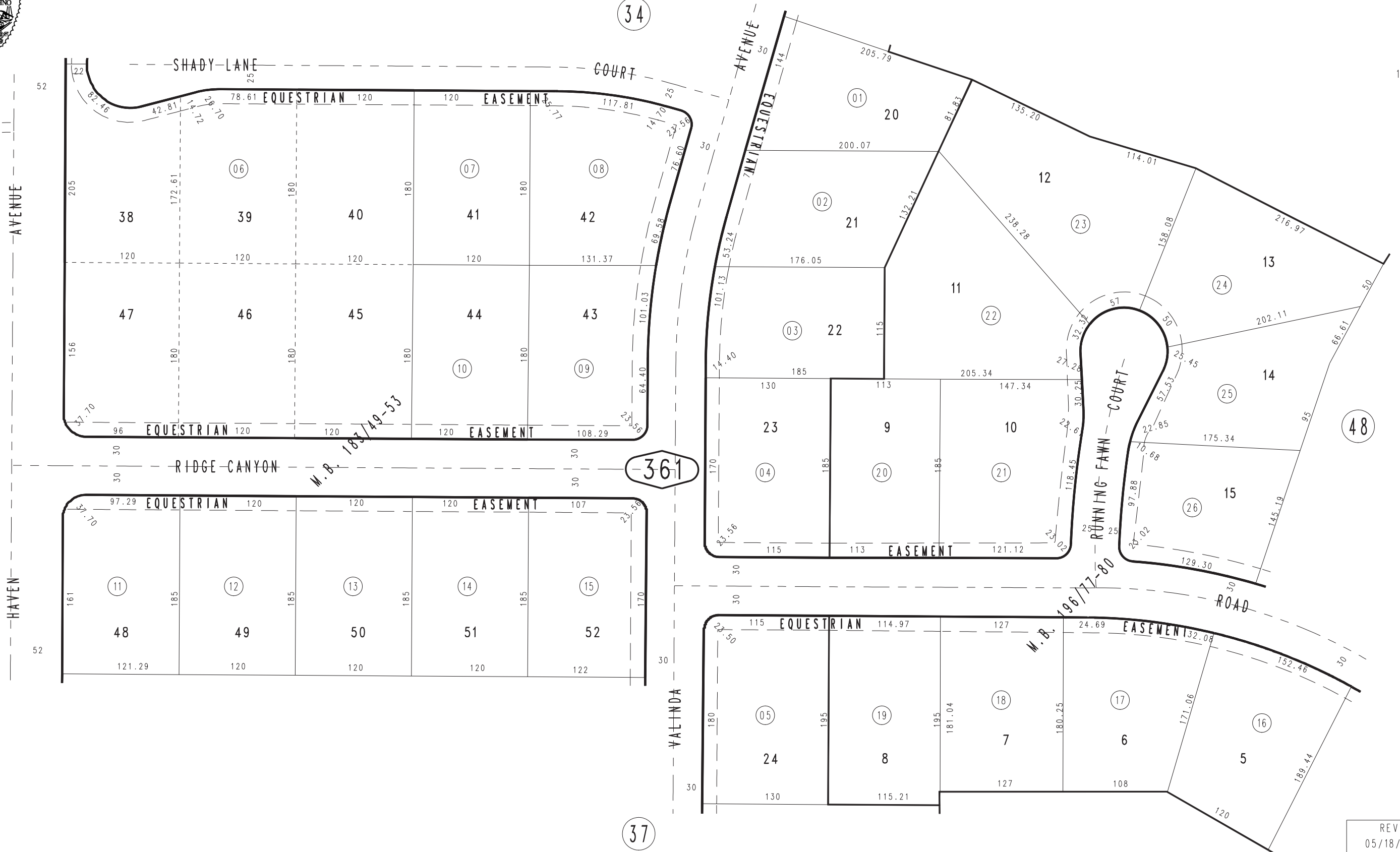
27

34

361

37

48



MAY 1988

Ptn. Tract No. 12650-2, M.B. 196/77-80

Ptn. S. 1/2, Sec. 24
T.1N., R.7W.

Assessor's Map
Book 1074 Page 36
San Bernardino County

REVISED
05/18/88 NP