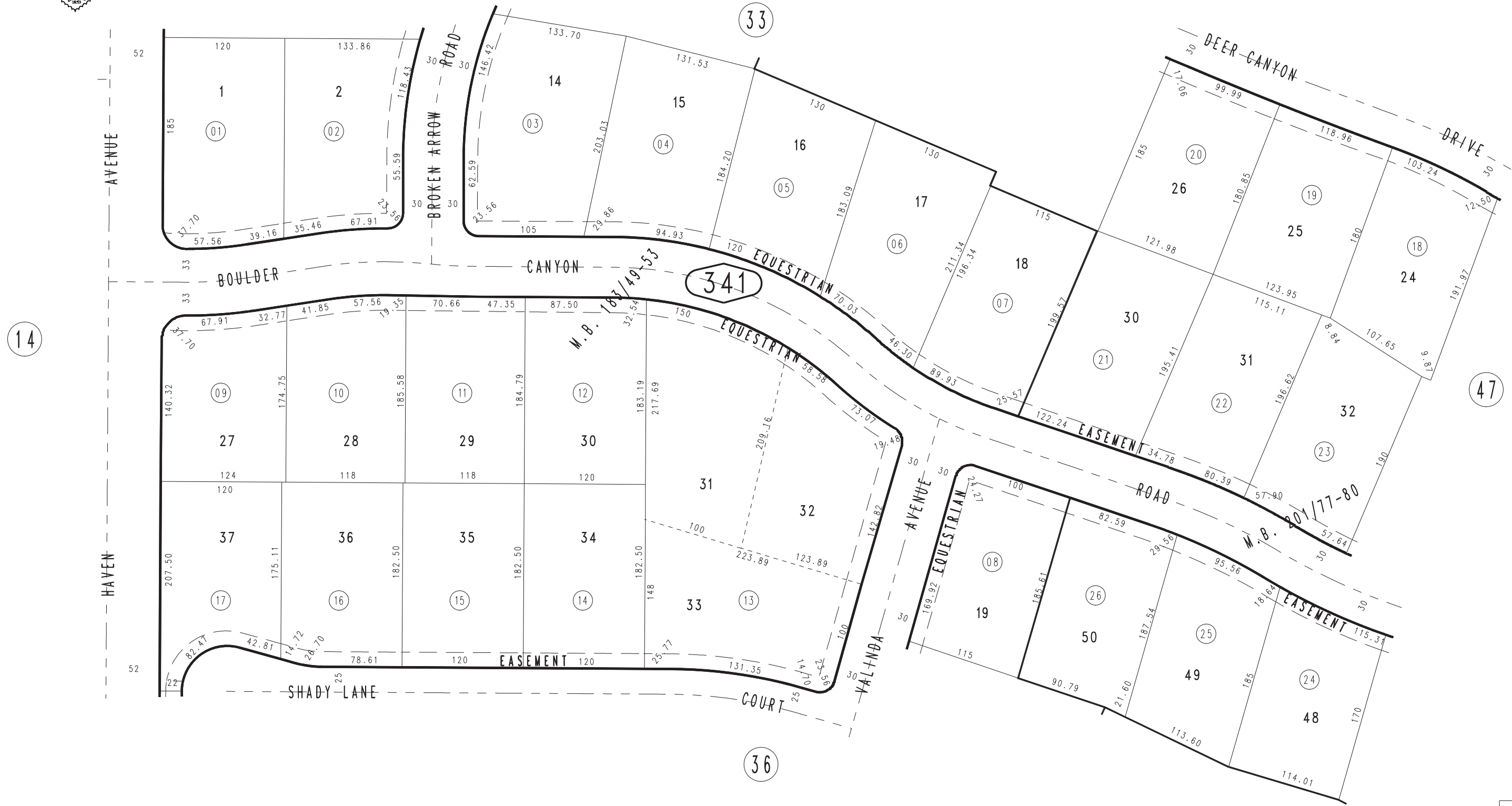


THIS MAP IS FOR THE PURPOSE
OF AD VALOREM TAXATION ONLY.

Ptn. Tract No. 12650-1, M.B. 183/49-53

City of Rancho Cucamonga 1074 - 34
Tax Rate Area
15001



MAY 1988

Ptn. Tract No. 12650-3, M.B. 201/77-80

Ptn. S.W. 1/4, Sec. 24
T.1N., R.7W.

Assessor's Map
Book 1074 Page 34
San Bernardino County

REVISED
05/18/88 NP