

THIS MAP IS FOR THE PURPOSE
OF AD VALOREM TAXATION ONLY.

Ptn. Tract No. 12332-1, M.B. 174/34-39

City of Rancho Cucamonga 1074 - 32
Tax Rate Area
15001

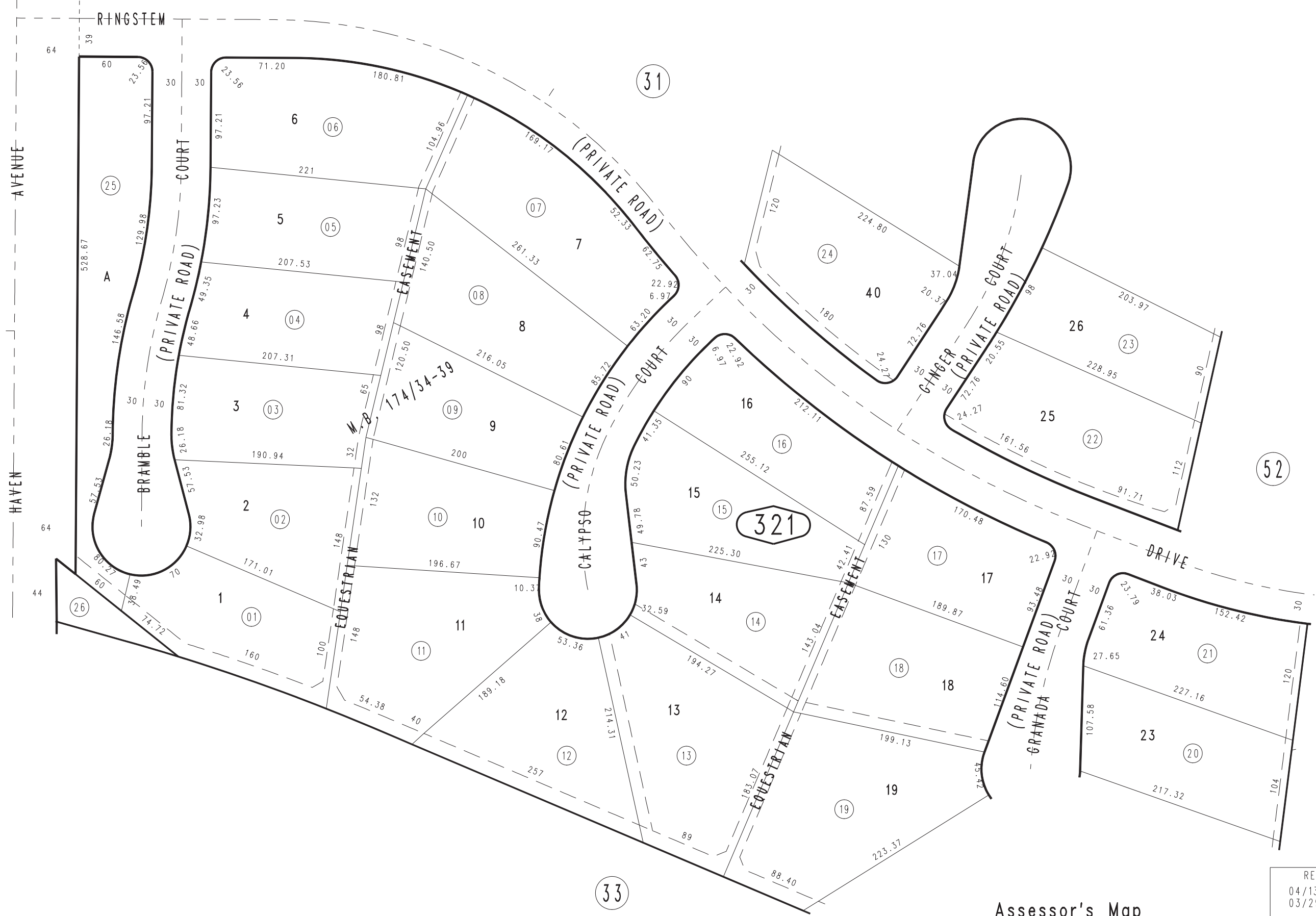


12

52

33

321



APR. 1988

Ptn. N.W. 1/4, Sec. 24
T.1N., R. 7W.

Assessor's Map
Book 1074 Page 32
San Bernardino County

REVISED
04/13/88 NP
03/29/89 PE