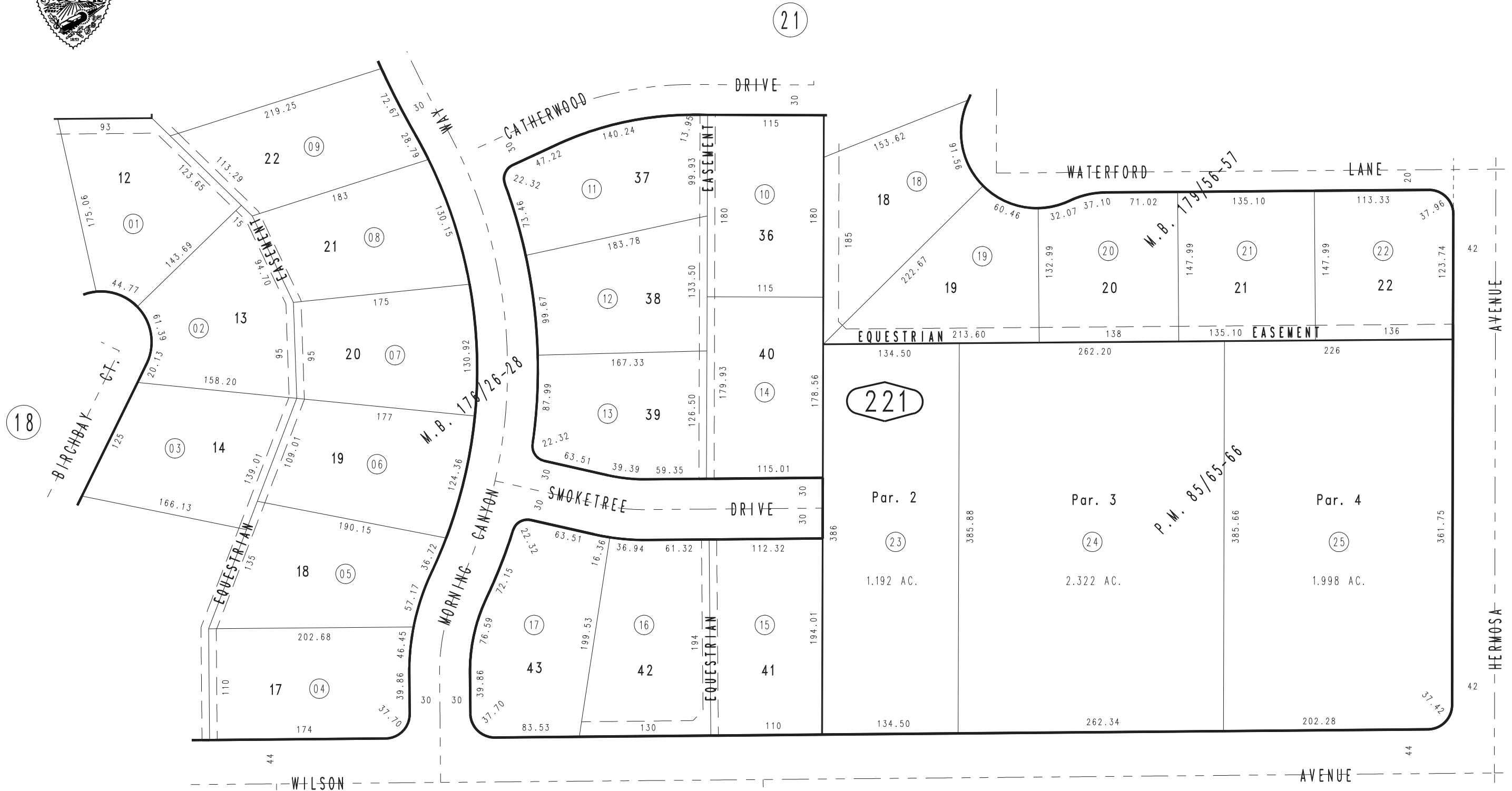


THIS MAP IS FOR THE PURPOSE
OF AD VALOREM TAXATION ONLY.

Ptn. Tract No. 10047, M.B. 176/26-28

City of Rancho Cucamonga 1074 - 22
Tax Rate Area
15001



0201
17

MAY 1988

Ptn. Parcel Map 8007, P.M. 85/65-66
Ptn. Tract No. 12588, M.B. 179/56-57

Ptn. S.W. 1/4, Sec. 23
T.1N., R.7W.

Assessor's Map
Book 1074 Page 22
San Bernardino County

REVISED
05/13/88 JS