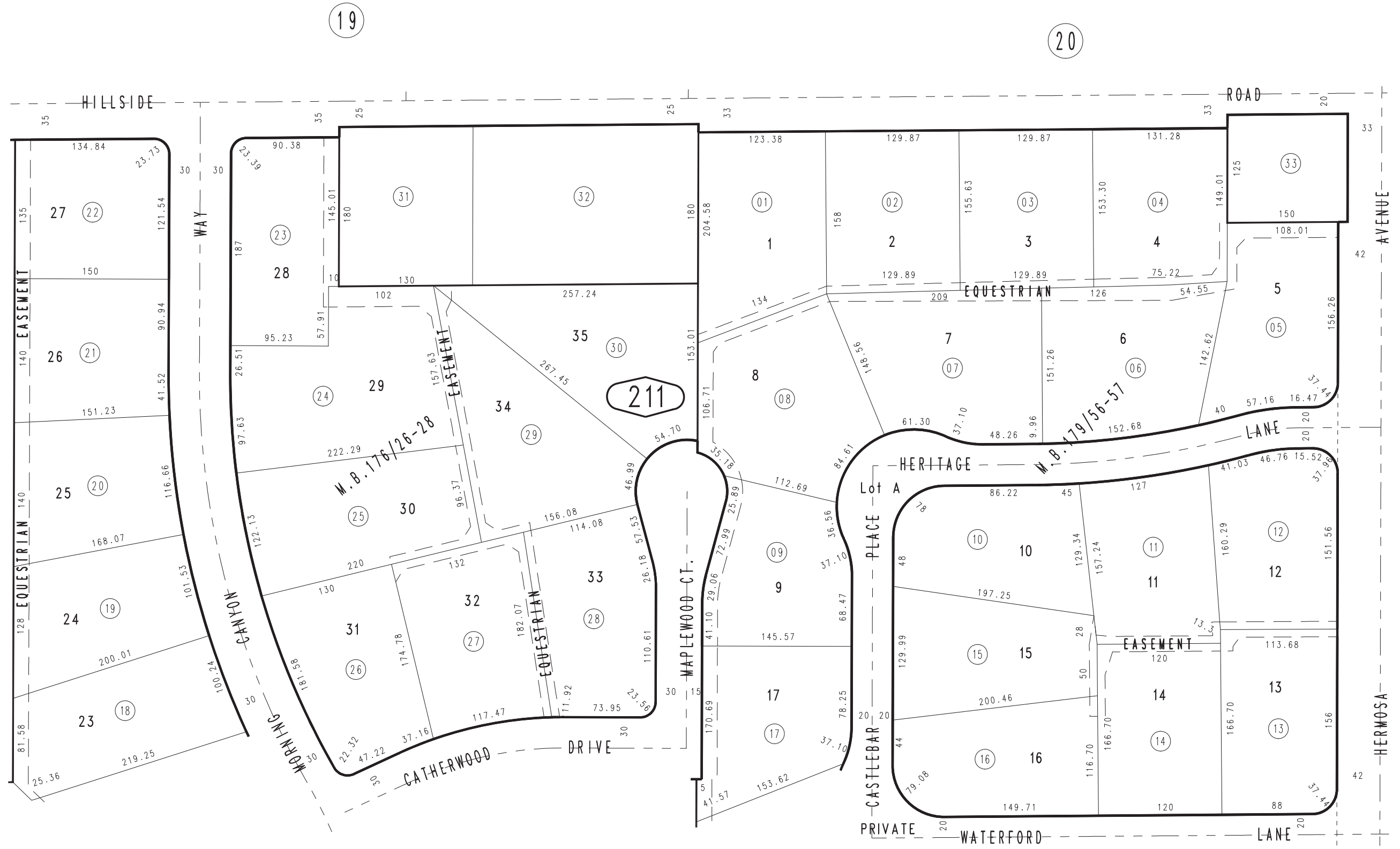


THIS MAP IS FOR THE PURPOSE
OF AD VALOREM TAXATION ONLY.

N.1/2, S.E.1/4, S.W.1/4, Sec. 23, T.1N., R.7W., S.B.M.

City of Rancho Cucamonga
Tax Rate Area
15001

1074 - 21



MAY 1988

Ptn. Tract No. 10047, M.B. 176/26-28
Ptn. Tract No. 12588, M.B. 179/56-57

Assessor's Map
Book 1074 Page 21
San Bernardino County

REVISED
02/23/10 LH