

THIS MAP IS FOR THE PURPOSE OF AD VALOREM TAXATION ONLY.

Ptn. Tract No. 13697, M.B. 209/99-100

City of Rancho Cucamonga 1074 - 14
Tax Rate Area
15001

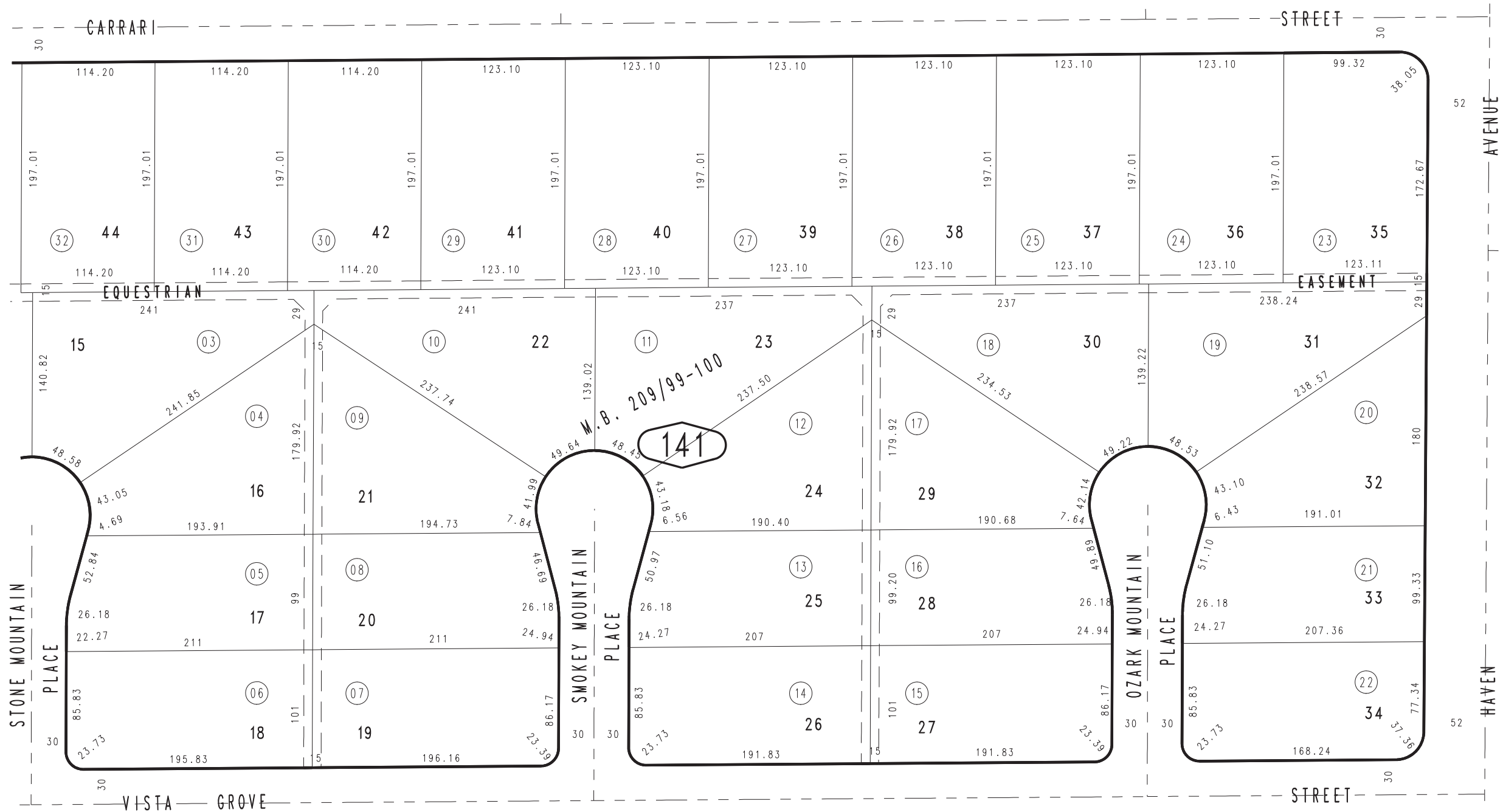


13



11

34



27

MAR. 1988

Ptn. N.E.1/4, Sec. 23
T.1N., R.7W.

Assessor's Map
Book 1074 Page 14
San Bernardino County

REVISED
06/24/10 KC-MC