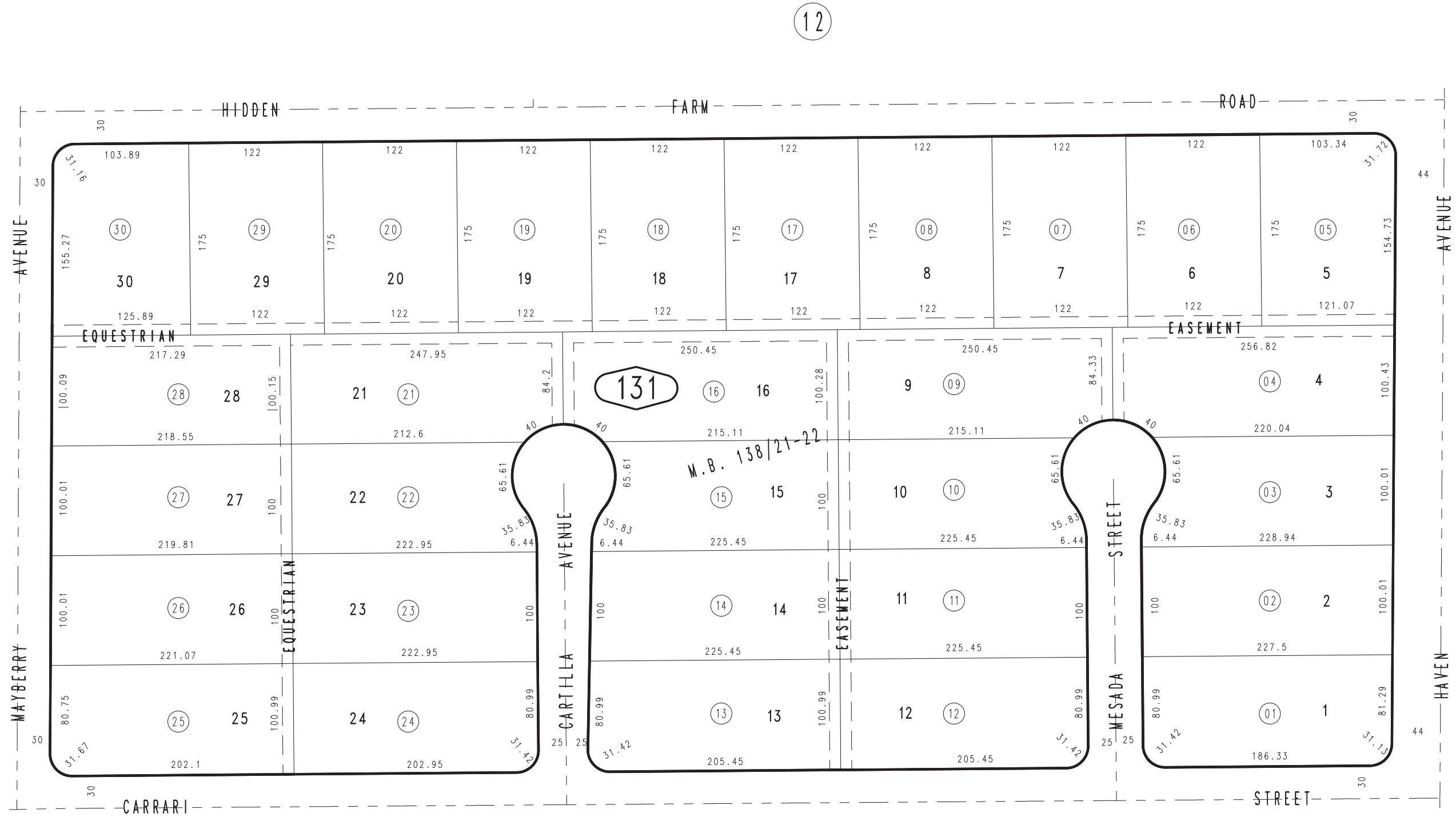


THIS MAP IS FOR THE PURPOSE  
OF AD VALOREM TAXATION ONLY.

Ptn. Tract No. 9329, M.B. 138/21-22

City of Rancho Cucamonga 1074 - 13  
Tax Rate Area  
15001



10

33

12

14

MAR. 1988

Ptn. N.E. 1/4, Sec. 23  
T.1N., R.7W.

Assessor's Map  
Book 1074 Page 13  
San Bernardino County

REVISED  
03/30/88 JES  
12/21/88 BLB