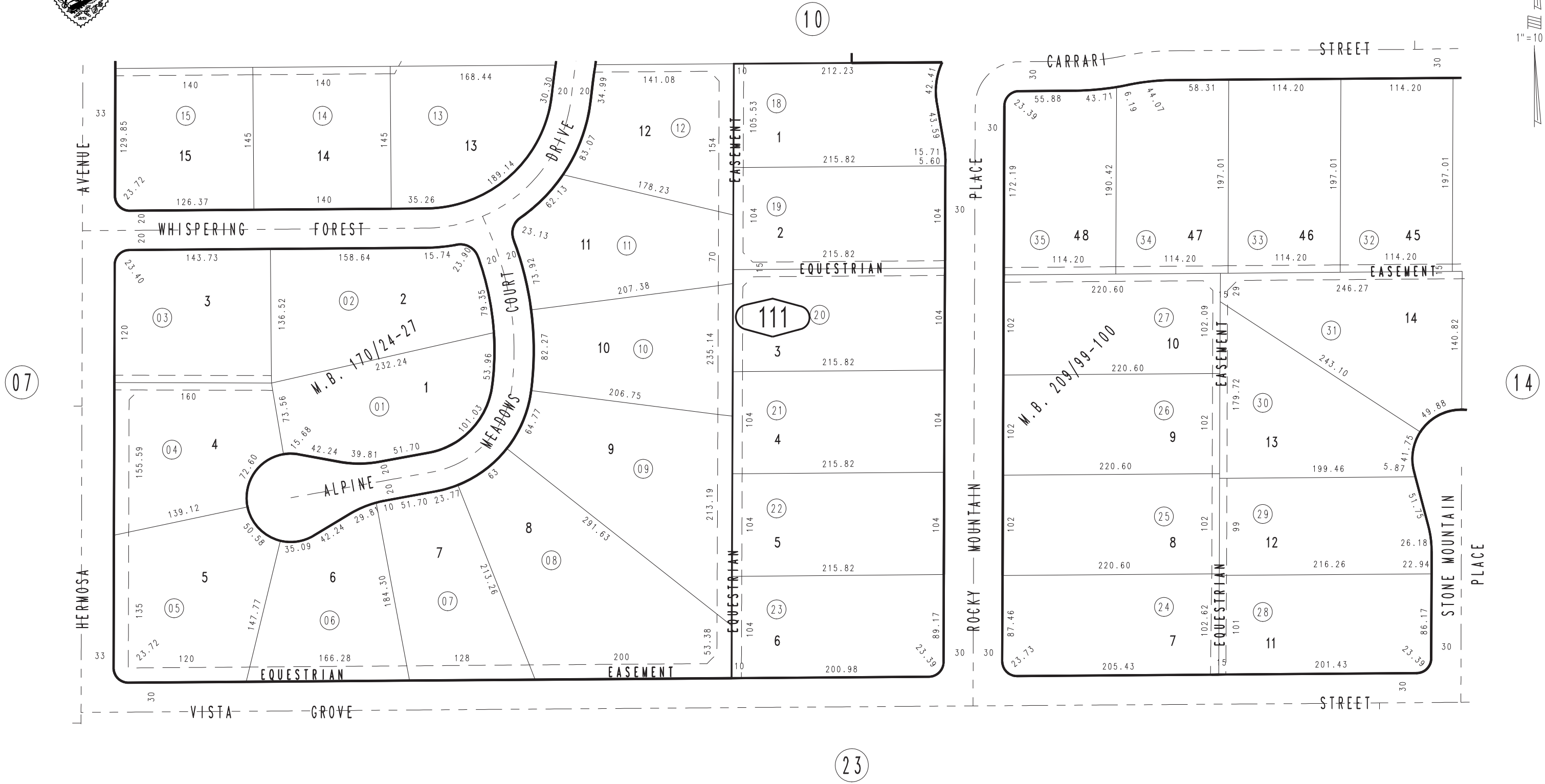


THIS MAP IS FOR THE PURPOSE
OF AD VALOREM TAXATION ONLY.

Ptn. Tract No. 12237-1, M.B. 170/24-27

City of Rancho Cucamonga 1074 - 11
Tax Rate Area
15001



MAR. 1988

Ptn. Tract NO. 13697, M.B. 209/99-100

Ptn. N.E.1/4, Sec. 23
T.1N., R.7W.

Assessor's Map
Book 1074 Page 11
San Bernardino County

REVISED
06/24/10 KC-MC