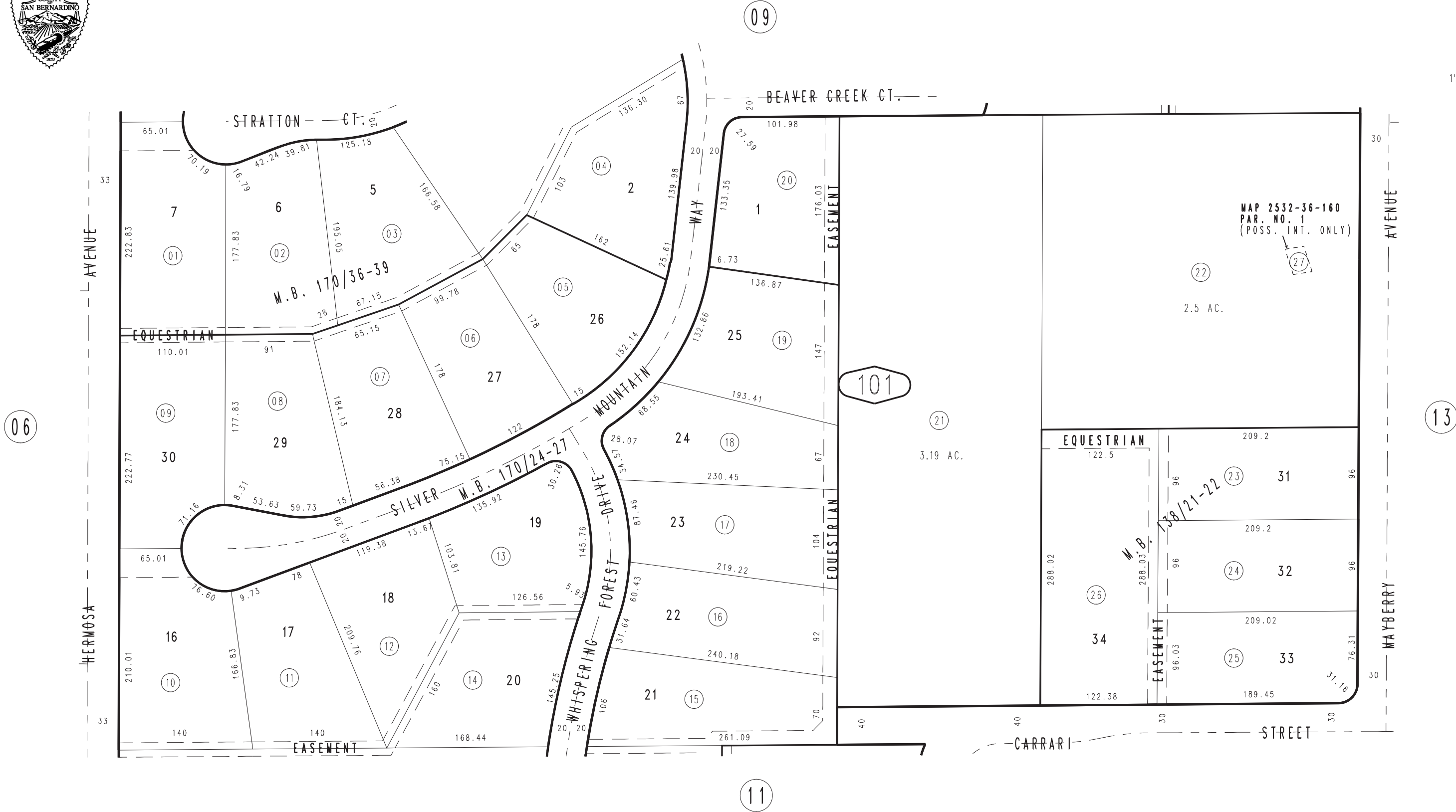


THIS MAP IS FOR THE PURPOSE
OF AD VALOREM TAXATION ONLY.

N.1/2, S.W.1/4, N.E.1/4, Sec. 23, T.1N., R.7W., S.B.M.

City of Rancho Cucamonga 1074 - 10
Tax Rate Area
15001



MAR. 1988

Ptn. Tract No. 9329, M.B. 138/21-22
Ptn. Tract No. 12237-2, M.B. 170/36-39
Ptn. Tract No. 12237-1, M.B. 170/24-27

Assessor's Map
Book 1074 Page 10
San Bernardino County

REVISED
06/30/16 GW