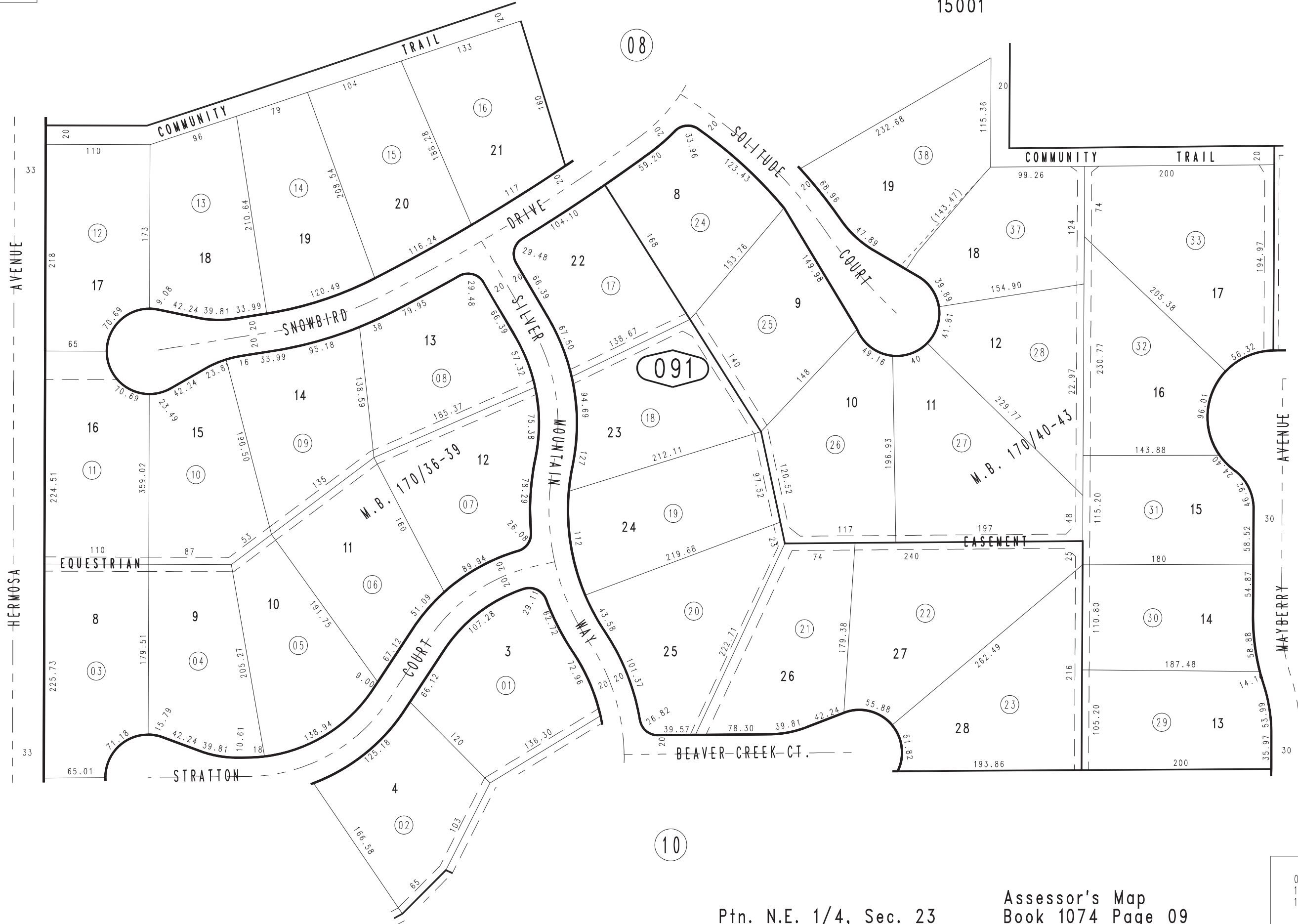


THIS MAP IS FOR THE PURPOSE
OF AD VALOREM TAXATION ONLY.

Ptn. Tract No. 12237-2, M.B. 170/36-39

City of Rancho Cucamonga 1074 - 09
Tax Rate Area
15001



MAR. 1988

Ptn. Tract No. 12237, M.B. 170/40-43

Ptn. N.E. 1/4, Sec. 23
T.1N., R.7W.

Assessor's Map
Book 1074 Page 09
San Bernardino County

REVISED
03/23/88/JES
11/03/03 KMP
11/24/03 KMP