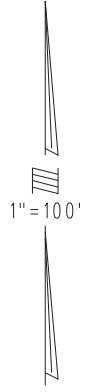
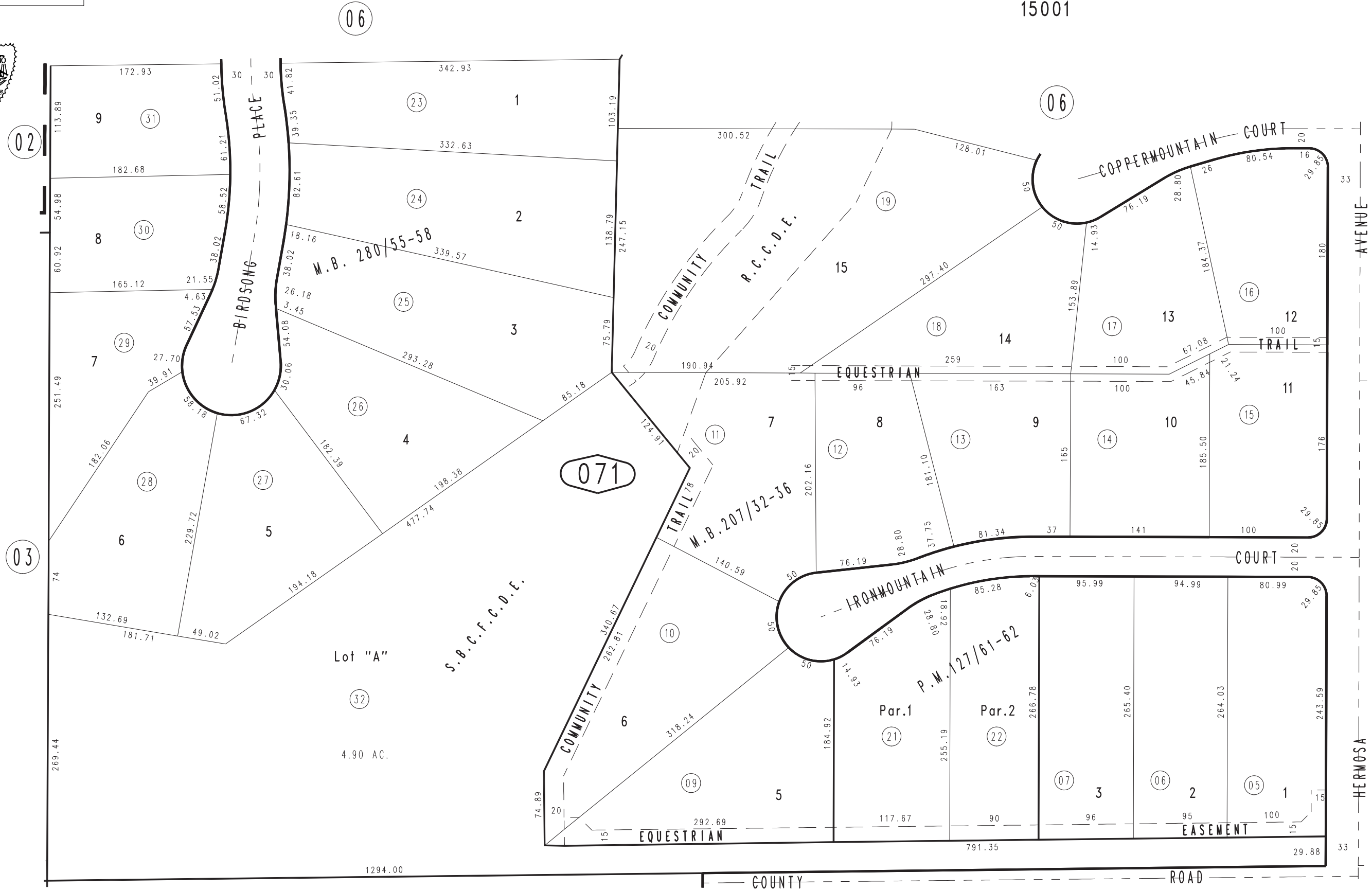


THIS MAP IS FOR THE PURPOSE  
OF AD VALOREM TAXATION ONLY.

Ptn. Tract No. 12902, M.B. 207/32-36

City of Rancho Cucamonga 1074 - 07  
Tax Rate Area  
15001



MAR. 1988

Tract No. 15914, M.B. 280/55-58  
Parcel Map No. 10351, P.M. 127/61-62

Ptn. N.W. 1/4, Sec. 23  
T.1N., R.7W.

Assessor's Map  
Book 1074 Page 07  
San Bernardino County

REVISED  
12/08/88 BLB  
03/29/89 PE  
06/27/2001 RM