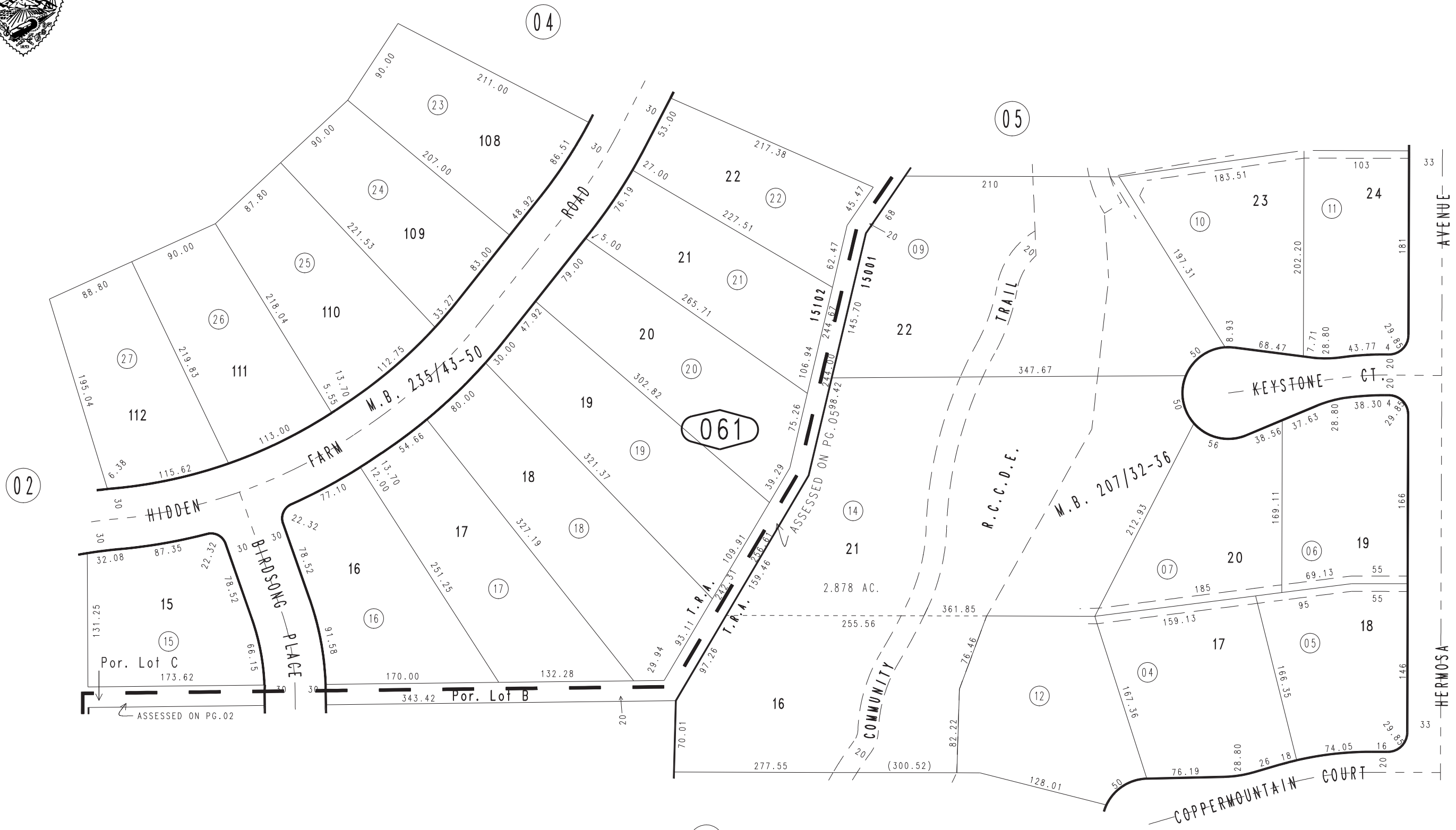


THIS MAP IS FOR THE PURPOSE
OF AD VALOREM TAXATION ONLY.

Ptn. Tract No. 12902, M.B. 207/32-36

City of Rancho Cucamonga 1074 - 06
Tax Rate Area
15001, 15102



MAR. 1988

Ptn. Tract No. 13316, M.B. 235/43-50

Ptn. N.W. 1/4, Sec. 23
T.1N., R.7W.

Assessor's Map
Book 1074 Page 06
San Bernardino County

REVISED
12/08/88 BLB
03/21/90 NP
05/24/90 NP
07/11/90 NP