

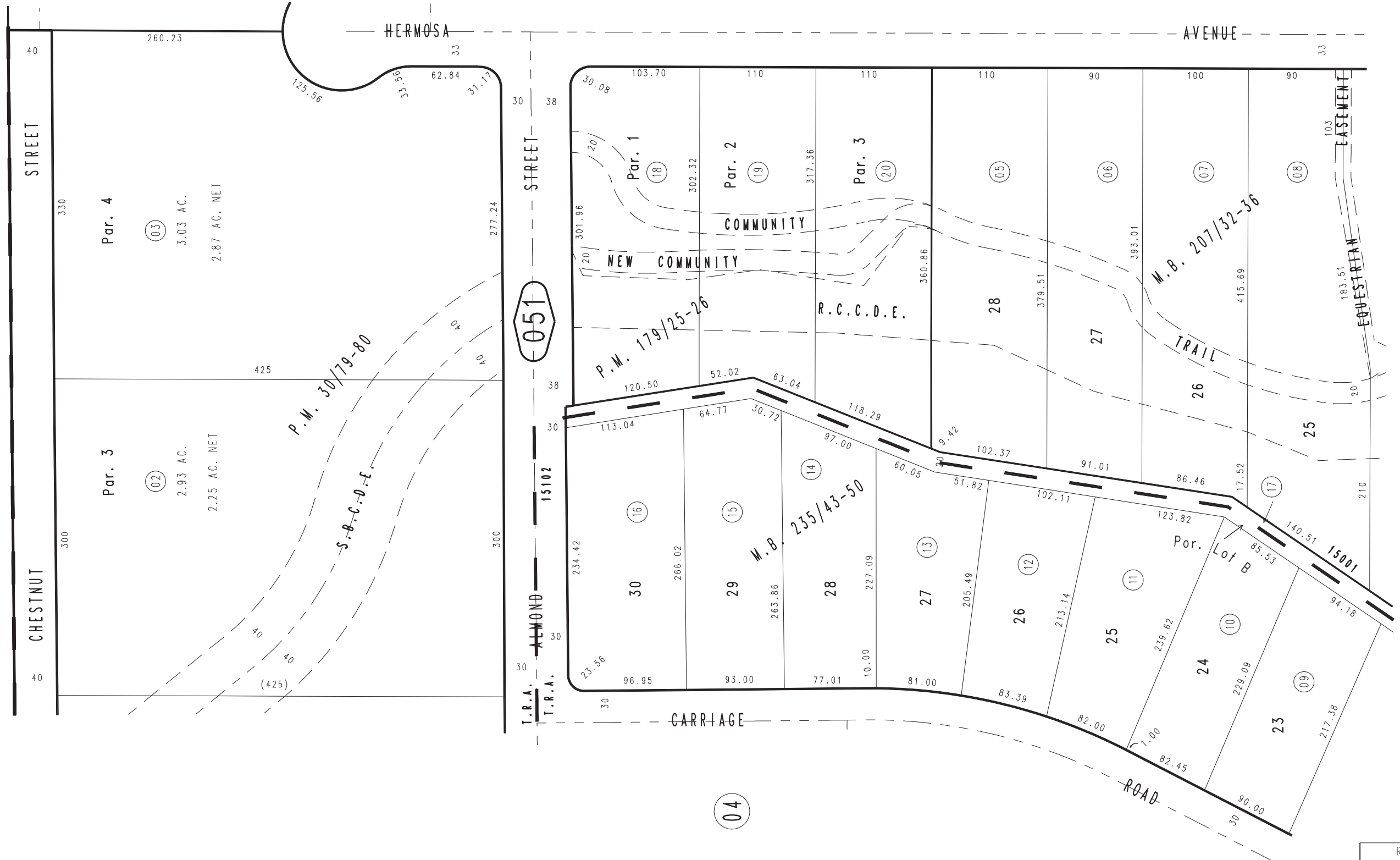
THIS MAP IS FOR THE PURPOSE OF AD VALOREM TAXATION ONLY.

Ptn. Parcel Map No. 3298, P.M. 30/79-80

City of Rancho Cucamonga 1074 - 05
Tax Rate Area
15001, 15102



0201
04



MAR. 1988

Parcel Map No. 11738, P.M. 179/25-26
Ptn. Tract No. 13316, M.B. 235/43-50
Ptn. Tract No. 12902, M.B. 207/32-36

Ptn. N.W. 1/4, Sec. 23
T.1N., R.7W.

Assessor's Map
Book 1074 Page 05
San Bernardino County

REVISED
03/27/09 TY