

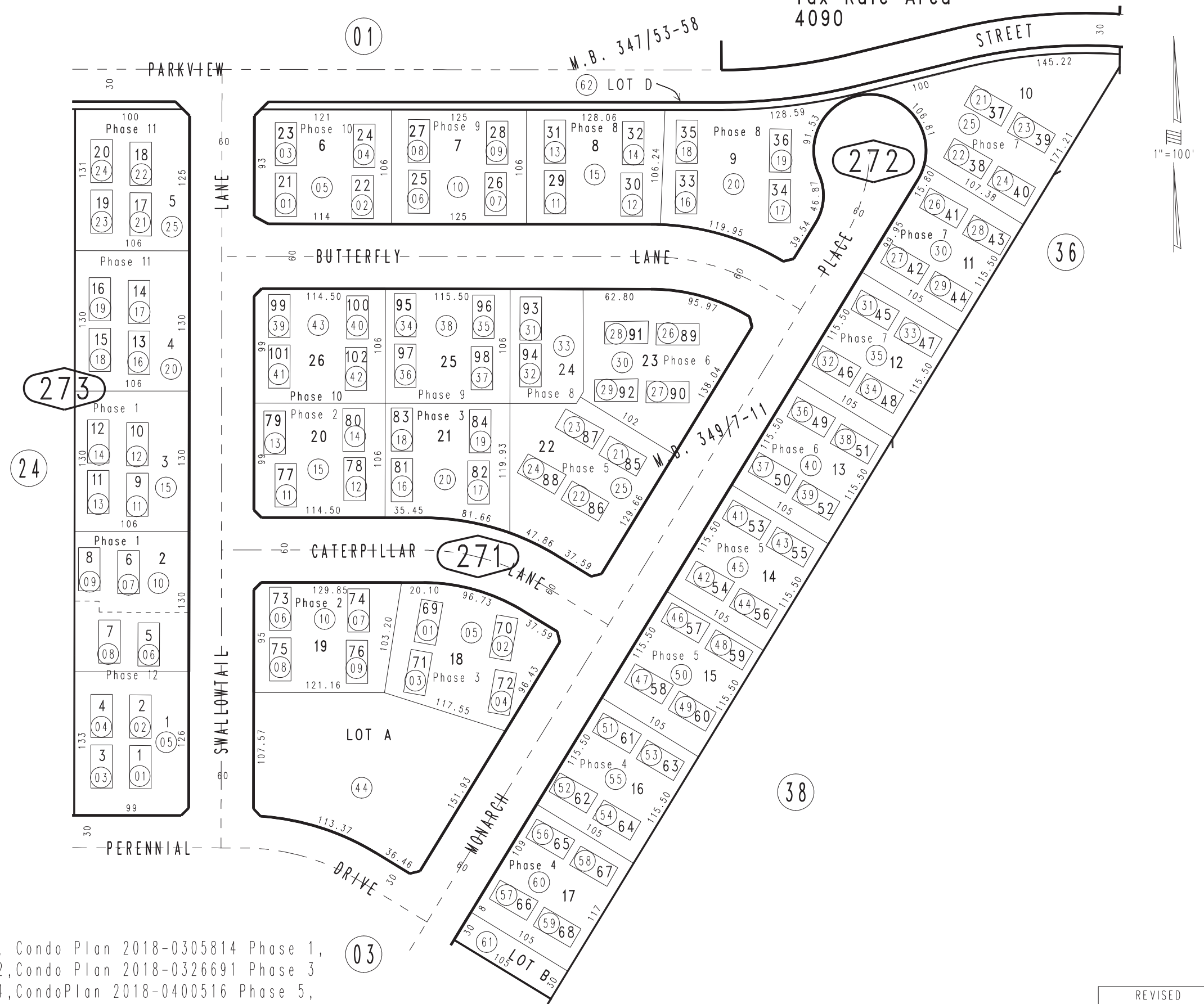
THIS MAP IS FOR THE PURPOSE OF AD VALOREM TAXATION ONLY.



Ptn. Tract No. 18913-4, M.B. 347/53-58

City of Ontario  
Tax Rate Area  
4090

1073 - 27



Tract No. 18074, M.B. 349/7-11, Condo Plan 2018-0305814 Phase 1,  
Condo Plan 2018-0326690 Phase 2, Condo Plan 2018-0326691 Phase 3  
Condo Plan 2018-0400515 Phase 4, Condo Plan 2018-0400516 Phase 5,  
Condo Plan 2018-0431221 Phase 6, Condo Plan 2018-0443778 Phase 7  
Condo Plan 2018-0460895 Phase 8, Condo Plan 2019-0011607 Phase 9  
Condo Plan 2019-0011608 Phase 10, Condo Plan 2019-0011609 Phase 11  
Condo Plan 2019-0239318 Phase 12

Ptn. N.E.1/4, Sec. 23  
T.2S., R.7W.

Assessor's Map  
Book 1073 Page 27  
San Bernardino County

REVISED  
11/10/20 GW