

THIS MAP IS FOR THE PURPOSE OF AD VALOREM TAXATION ONLY.



Ptn. S.E.1/4 Sec.22, T.2S.,R.7W., S.B.B.&M.

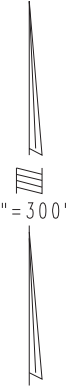
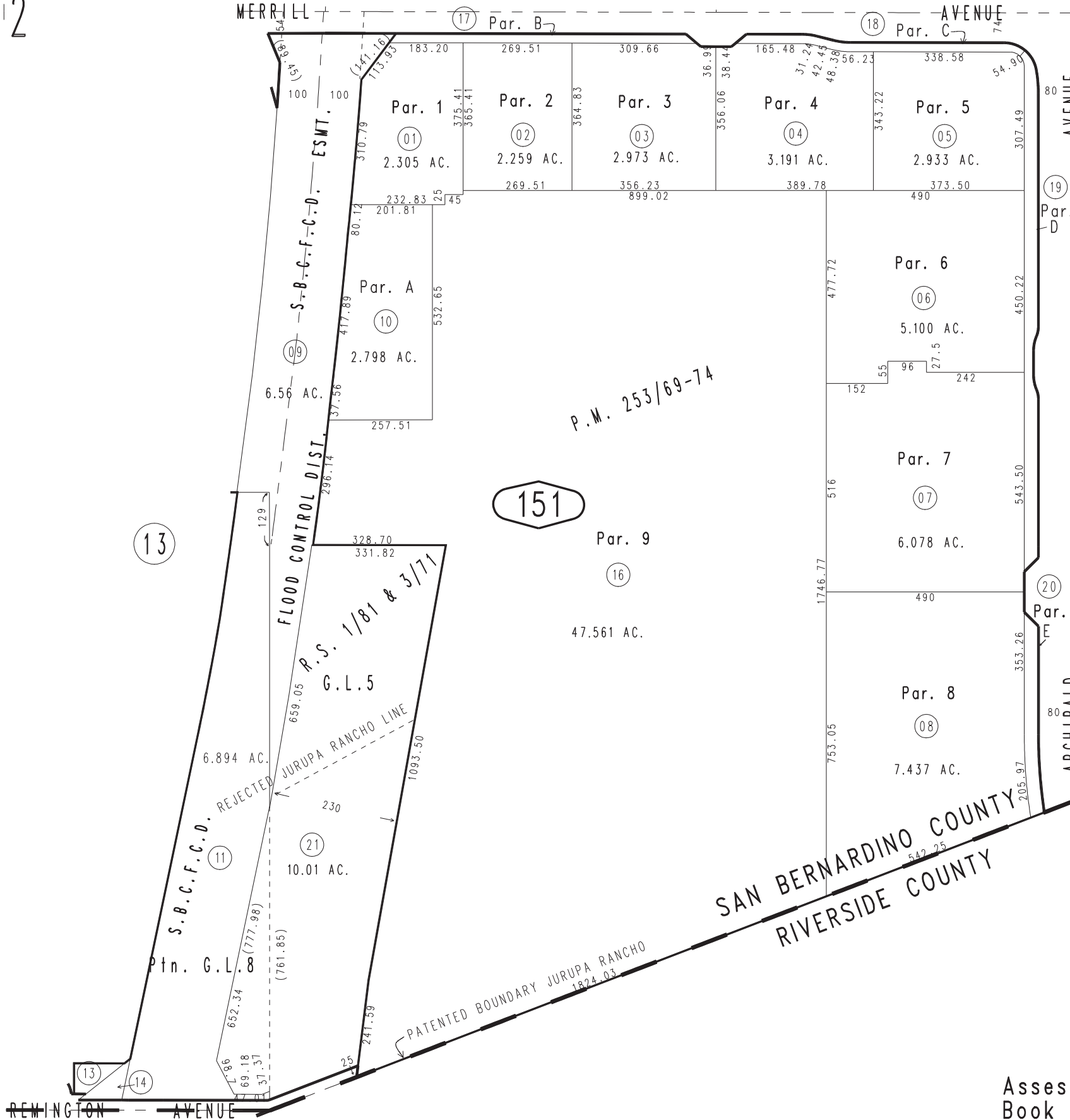
City of Ontario  
Tax Rate Area  
4089

1073 - 15

SEC.  
22

13

AUGUST 2020 GW



Parcel Map No. 19904, P.M. 253/69-74

Assessor's Map  
Book 1073 Page 15  
San Bernardino County

REVISED  
11/30/20 GW  
02/07/25 RU