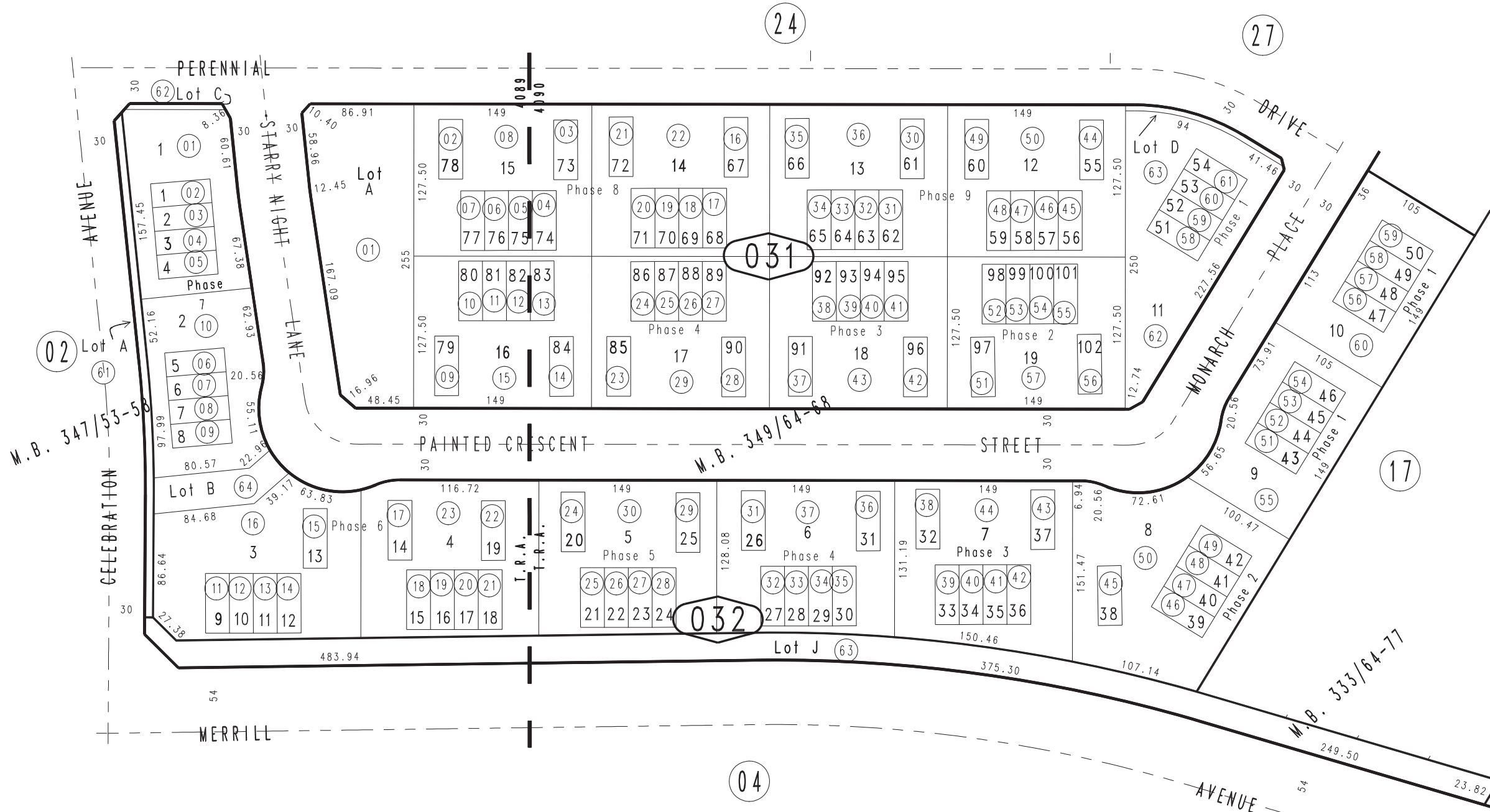


THIS MAP IS FOR THE PURPOSE
OF AD VALOREM TAXATION ONLY.

Ptn. Tract No. 17821, M.B. 333/64-77

City of Ontario
Tax Rate Area
4089 4090

1073 - 03



Tract No. 18998, M.B. 349/64-68
 Condo Plan 2018-0294256 Ph. 1, Condo Plan 2018-0294257 Ph. 2
 Condo Plan 2018-0432129 Ph. 3, Condo Plan 2019-0064444 Ph. 4
 Condo Plan 2019-0076377 Ph. 5, Amended Condo Plan 2019-0175152 Ph. 5
 Condo Plan 2019-0229780 Ph.6, Condo Plan 2019-0348440 Ph. 7
 Condo Plan 2019-0348441 Ph. 8, Condo Plan 2019-0348442 Ph.9
 Ptn. of Tract No. 18913-4, M.B. 347/53-58

AUGUST 2020 GW

Ptn. N.W.1/4, Sec. 23
T.2S., R.7W.

Assessor's Map
Book 1073 Page 03
San Bernardino County

REVISED