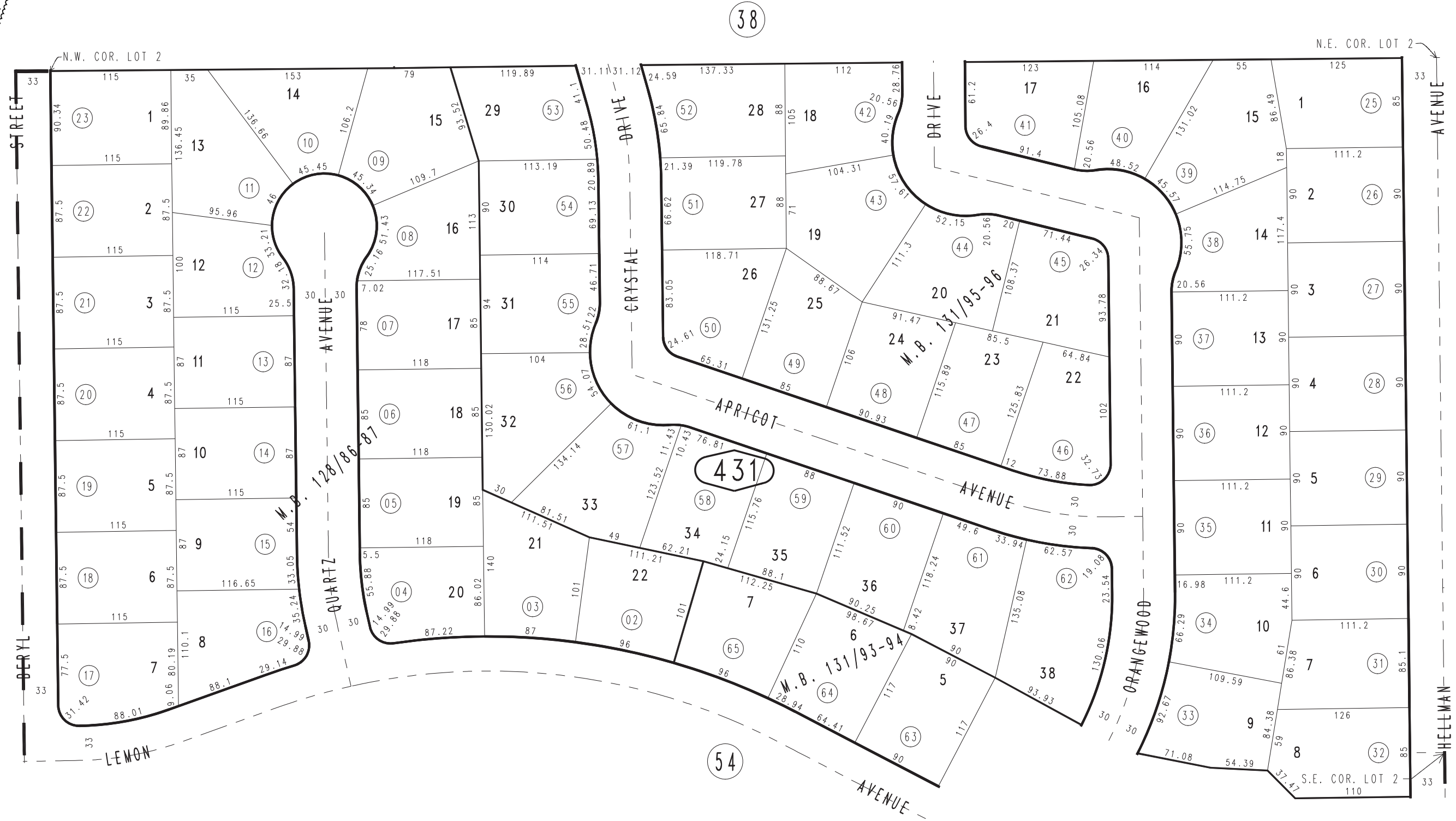


THIS MAP IS FOR THE PURPOSE  
OF AD VALOREM TAXATION ONLY.

Ptn. Tract No. 8973, M.B. 128/86-87

City of Rancho Cucamonga 1062 - 43  
Tax Rate Area  
15005



September 2004

Tract No. 9342, M.B. 131/95-96  
Ptn. Tract No. 9341, M.B. 131/93-94  
Ptn. Tract No. 8973, M.B. 128/86-87

Ptn. S.W.1/4, Sec.27  
T.1N.,R.7W.

Assessor's Map  
Book 1062 Page 43  
San Bernardino County

REVISED