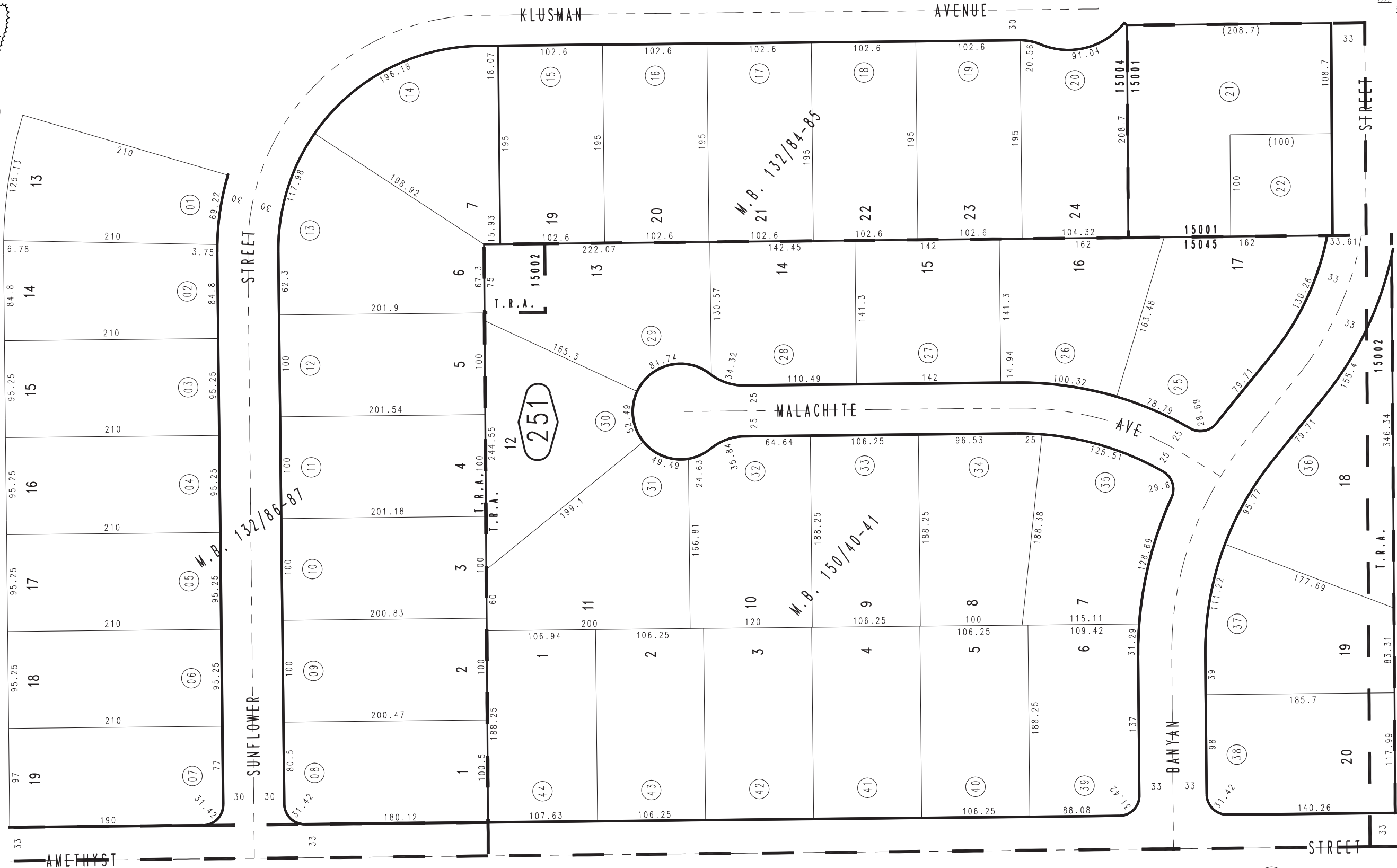
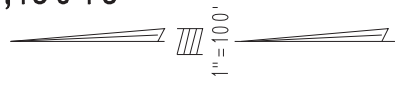


THIS MAP IS FOR THE PURPOSE OF AD VALOREM TAXATION ONLY.

Ptn. N.E.1/4, Sec.27, T.1N.,R.7W.

City of Rancho Cucamonga 1062 - 25
Tax Rate Area
15001,15002,15004,15005,15045



September 2004

Tract No. 9444, M.B. 150/40-41
Ptn. Tract No. 9268, M.B. 132/86-87
Ptn. Tract No. 9267, M.B. 132/84-85

Assessor's Map
Book 1062 Page 25
San Bernardino County

REVISED
02/16/07 LH
03/19/08 GW
07/02/10 LH-MC