

THIS MAP IS FOR THE PURPOSE OF AD VALOREM TAXATION ONLY.

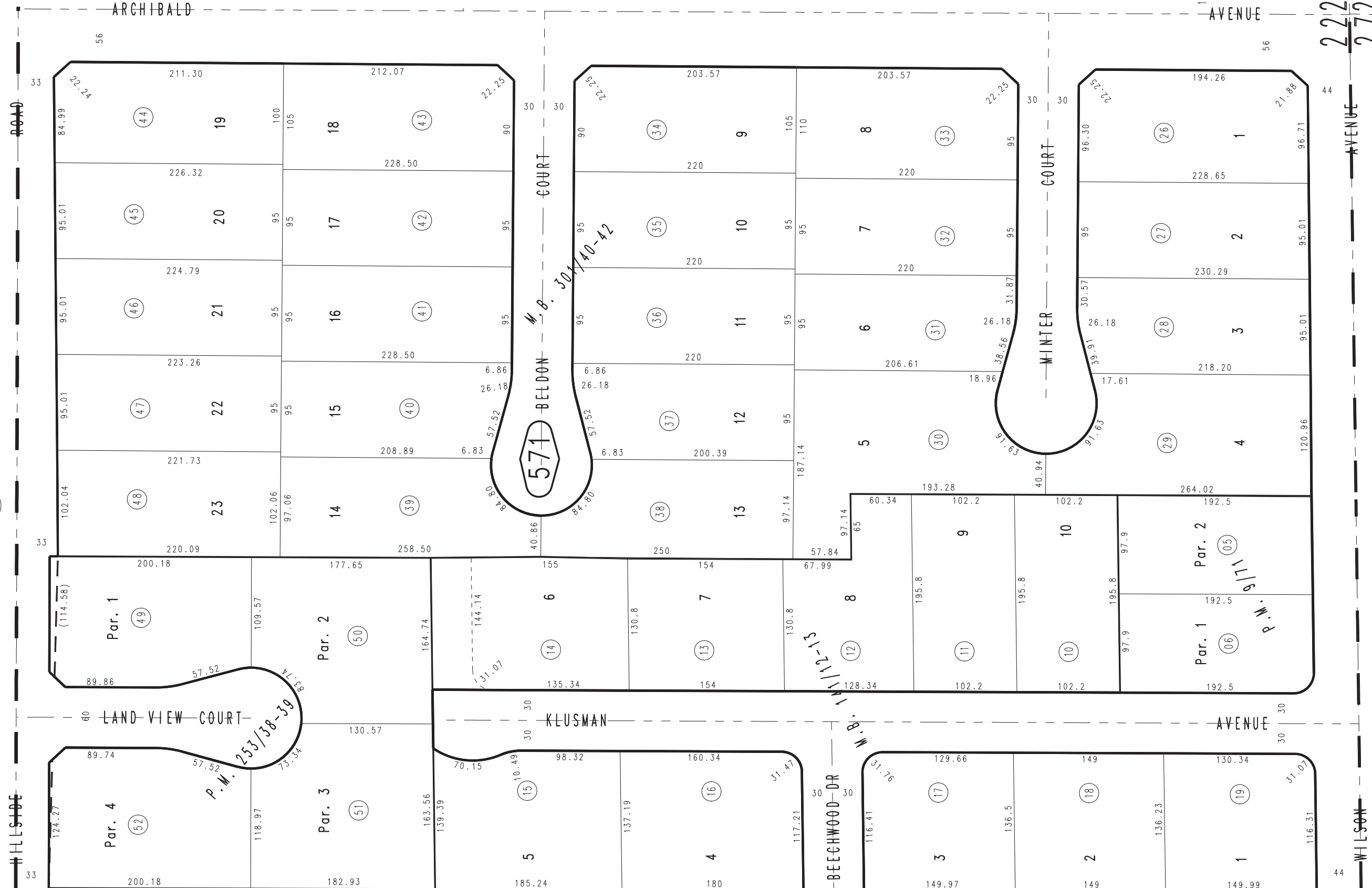
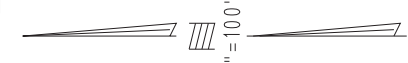


1074 / 17

Ptn. S.E.1/4, Sec.22, T.1N.,R.7W., S.B.B.&M.

1074 / 18

City of Rancho Cucamonga 1061 - 57
Tax Rate Area 15001



2223 / 2726

1062 / 09

Tract No. 16430, M.B. 301/40-42
Tract No. 9588, M.B. 141/12-13
Parcel Map No. 782, P.M. 9/71

Parcel Map No. 19855, P.M. 253/38-39

Assessor's Map
Book 1061 Page 57
San Bernardino County

REVISED
01/14/20 KA
06/30/20 KA