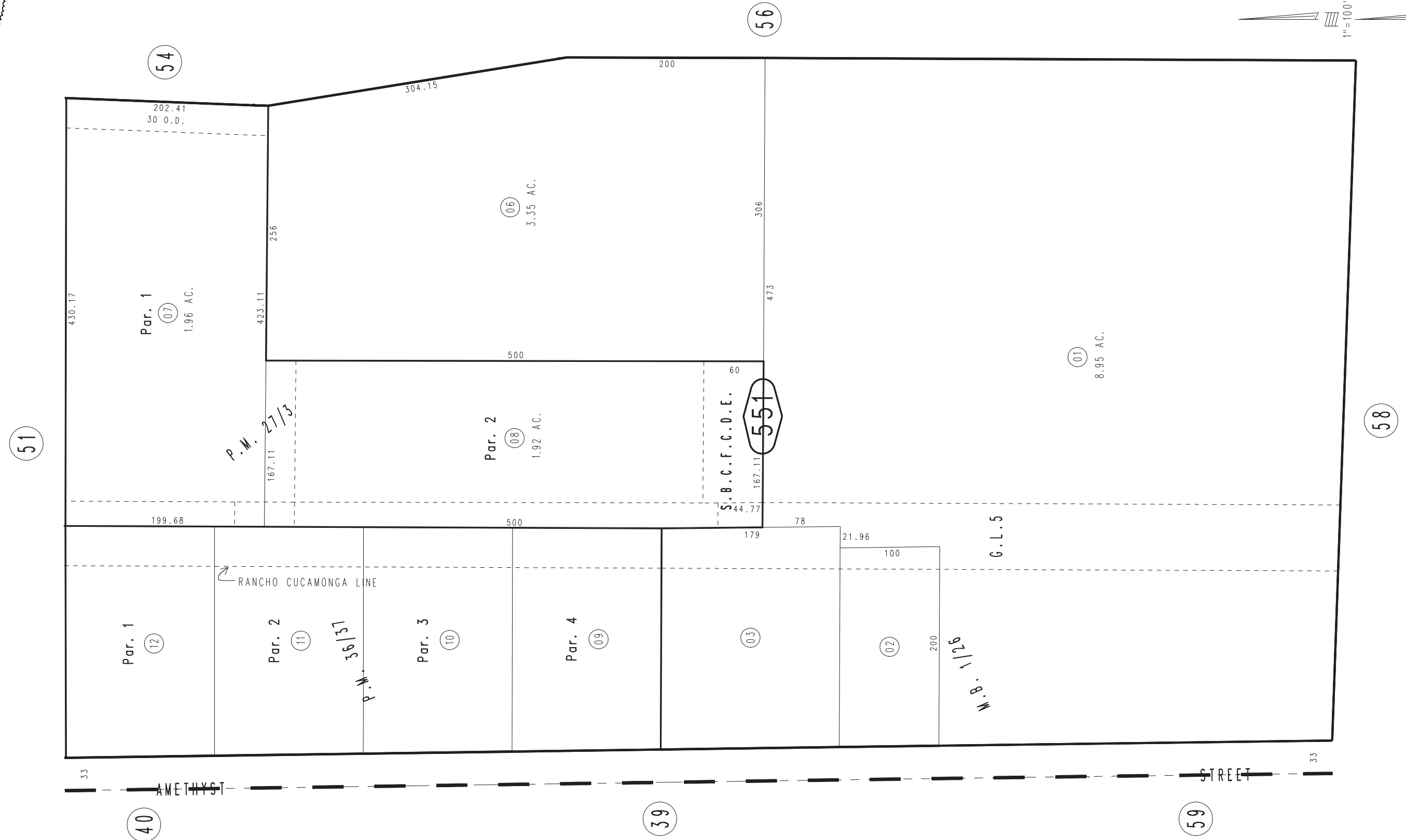


THIS MAP IS FOR THE PURPOSE  
OF AD VALOREM TAXATION ONLY.

Ptn. S.E.1/4, Sec.22, T.1N.,R.7W., S.B.B.&M

City of Rancho Cucamonga 1061 - 55  
Tax Rate Area  
15002



July 2004

Parcel Map No. 3613, P.M.36/37  
Parcel Map No. 2874, P.M. 27/3  
Ptn. Rancho Cucamonga, M.B. 1/26

Assessor's Map  
Book 1061 Page 55  
San Bernardino County

REVISED