

THIS MAP IS FOR THE PURPOSE
OF AD VALOREM TAXATION ONLY.

Ptn. S.E. 1/4 Sec. 33, T.2S, R.7W, S.B.&M.

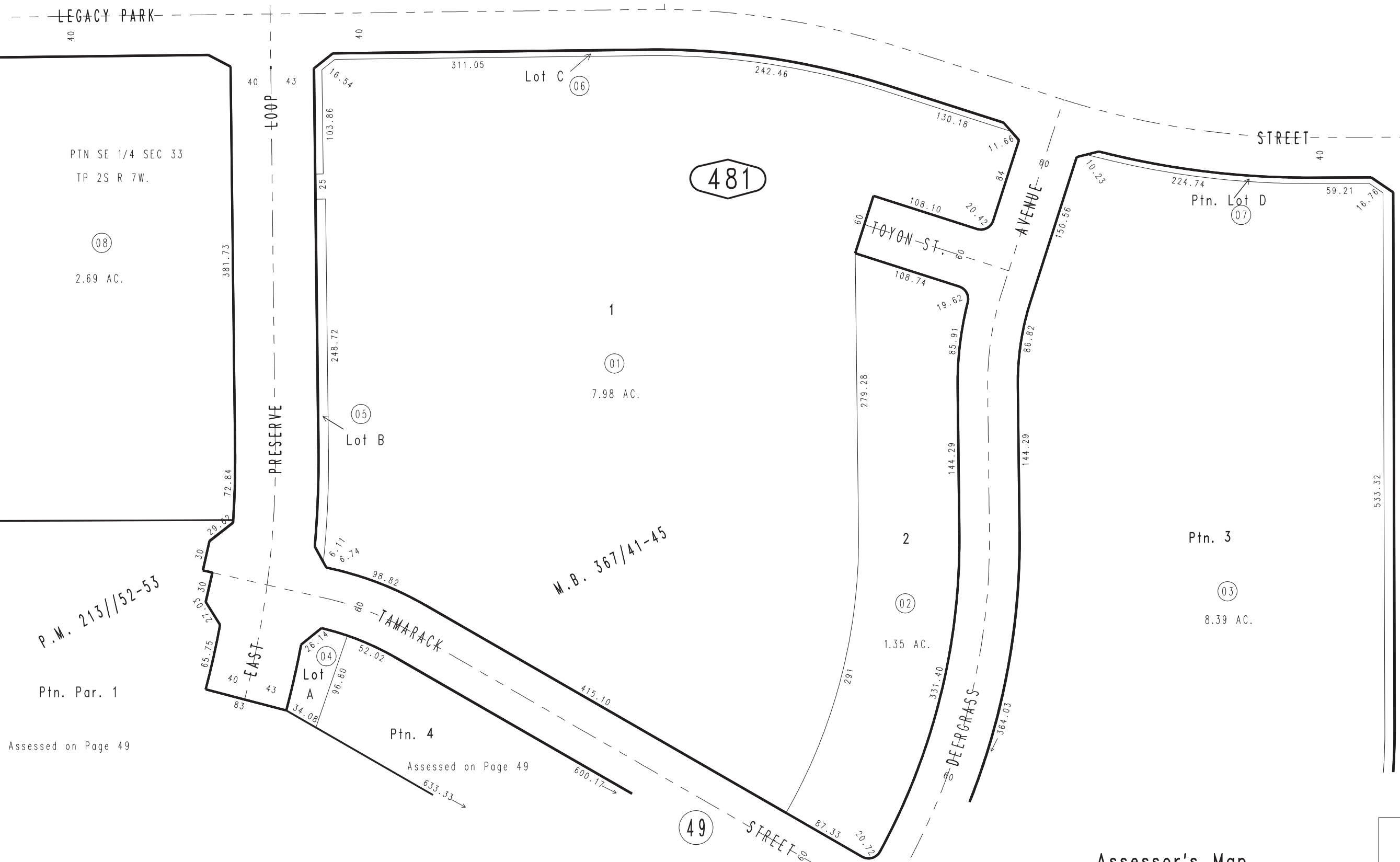
City of Chino
Tax Rate Area
1164

1057 - 48



18

18



PTN SE 1/4 SEC 33
TP 2S R 7W.

2.69 AC.

7.98 AC.

8.39 AC.

1.35 AC.

P.M. 213//52-53

M.B. 367/41-45

Ptn. Par. 1
Assessed on Page 49

Assessed on Page 49