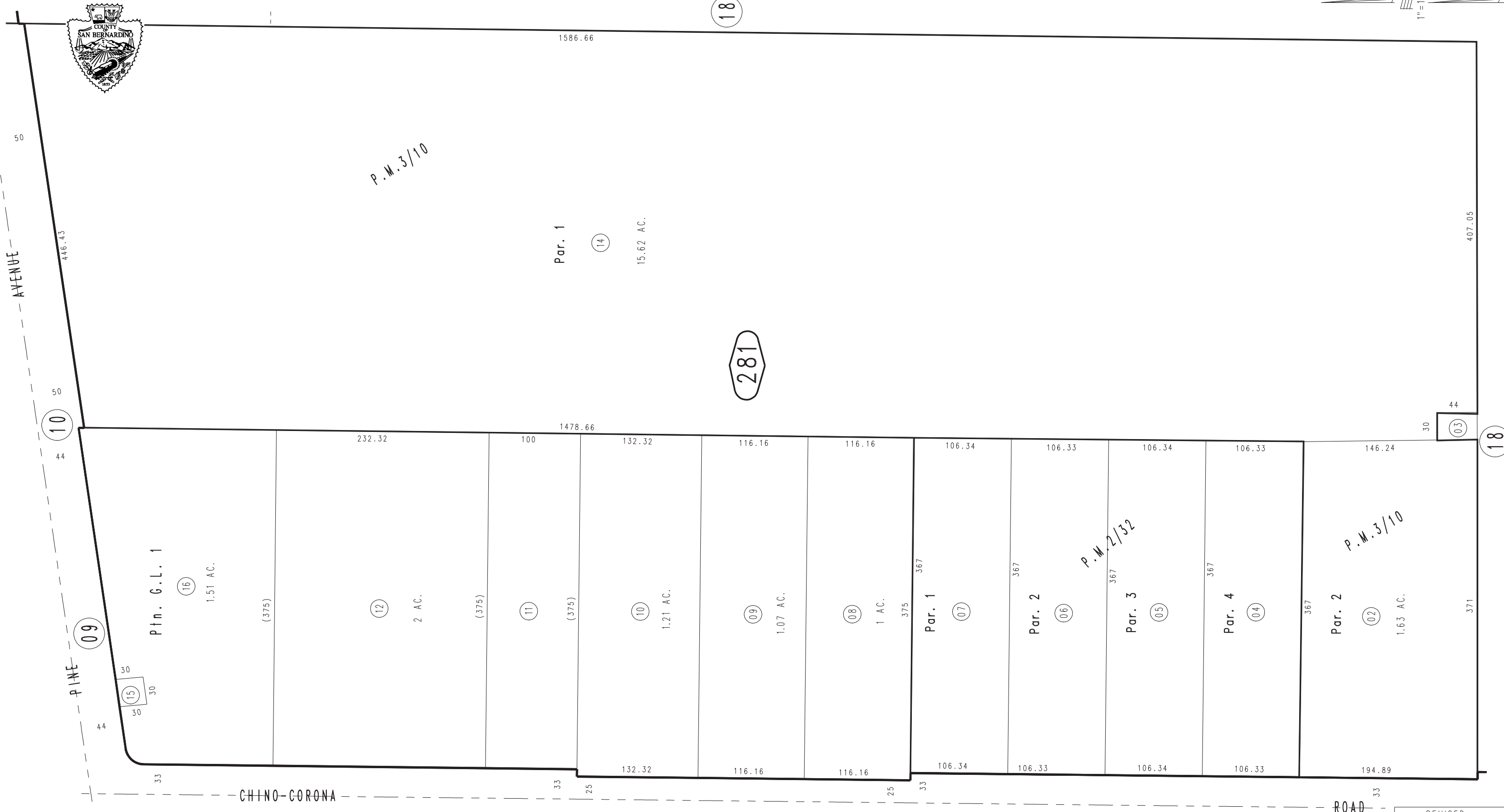


THIS MAP IS FOR THE PURPOSE
OF AD VALOREM TAXATION ONLY.

Ptn. Sec. 32, T.2S., R.7W., S.B.&M.

City of Chino
Tax Rate Area
1164

1057 - 28



NOV. 1975

Parcel Map No. 149, P.M. 3/10
Parcel Map No. 189, P.M. 2/32

Assessor's Map
Book 1057 Page 28
San Bernardino County

REVISED
08/14/14 KC