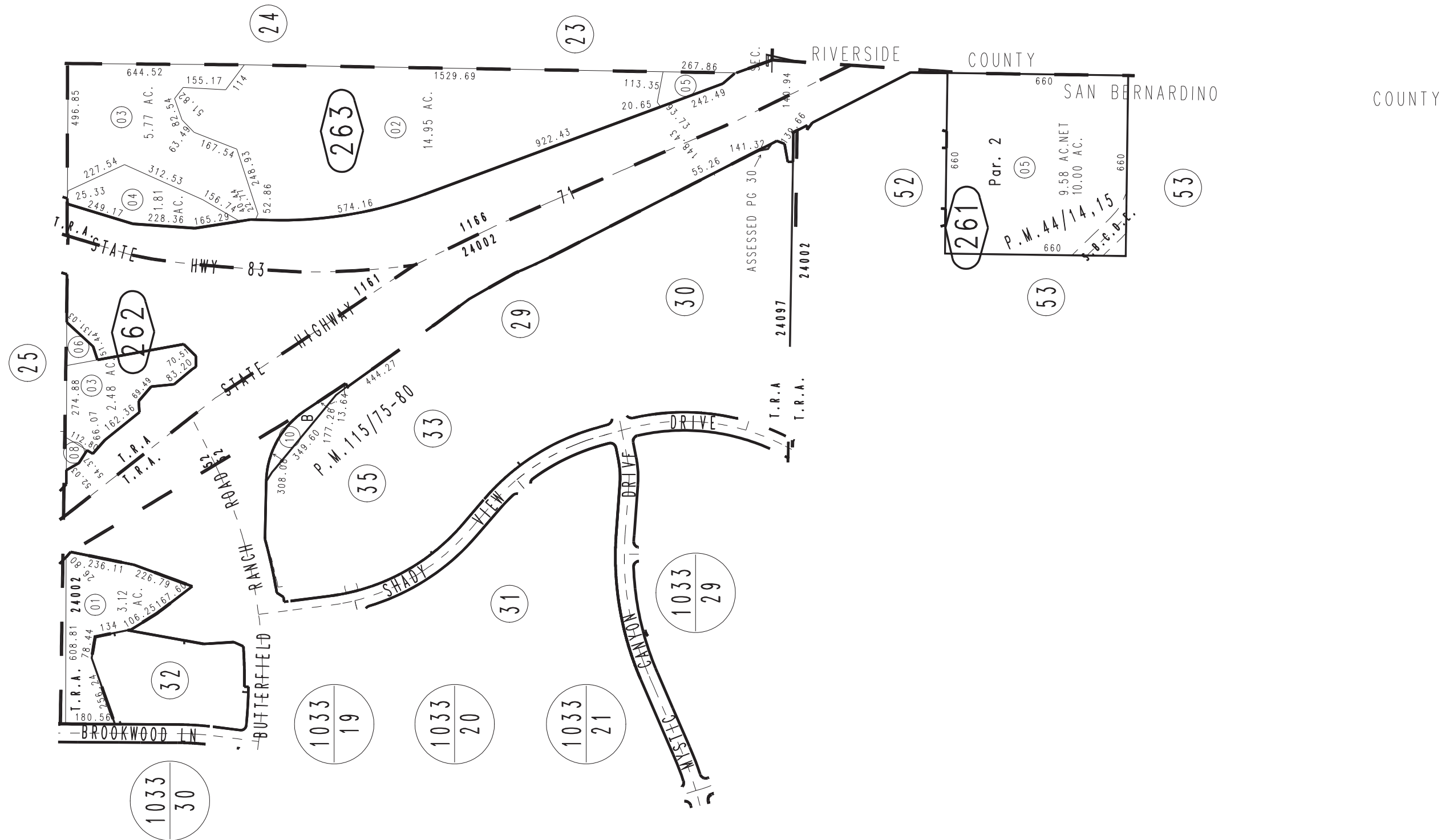
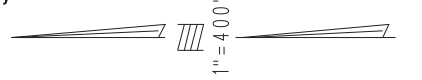


THIS MAP IS FOR THE PURPOSE OF AD VALOREM TAXATION ONLY.

W.1/2, Sec. 7, T.3S., R.7W., S.B.& M.

Chino Outside
City of Chino Hills
City of Chino
Tax Rate Area
1161,1166,24002,24097

1057 - 26



AUG. 1975

Ptn. Parcel Map No. 10141, P.M. 115/75-80
Ptn. Parcel Map No. 3143, P.M. 44/14-15

Assessor's Map
Book 1057 Page 26
San Bernardino County

REVISED
09/11/24 RU