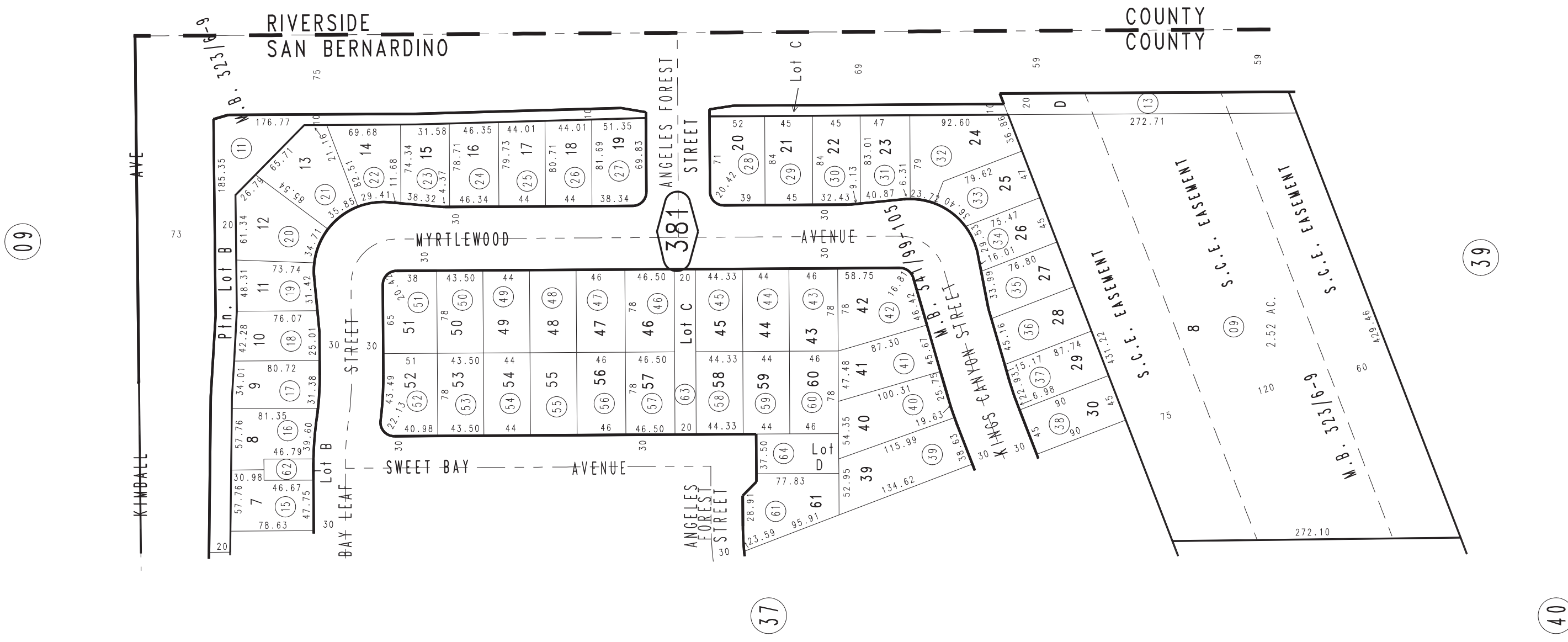
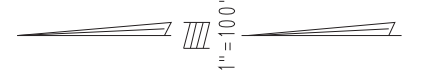


THIS MAP IS FOR THE PURPOSE OF AD VALOREM TAXATION ONLY.

Ptn. S.E.1/4, Sec.28, T.2S.,R.7W., S.B.B.&M.

City of Chino  
Tax Rate Area  
1164

1055 - 38



09

39

37

40

November 2004

Ptn. Tract No. 18890, M.B. 341/99-105  
Ptn. Tract No. 17058, M.B. 323/6-9

Assessor's Map  
Book 1055 Page 38  
San Bernardino County

REVISED  
04/29/15 GW  
10/13/15 KC