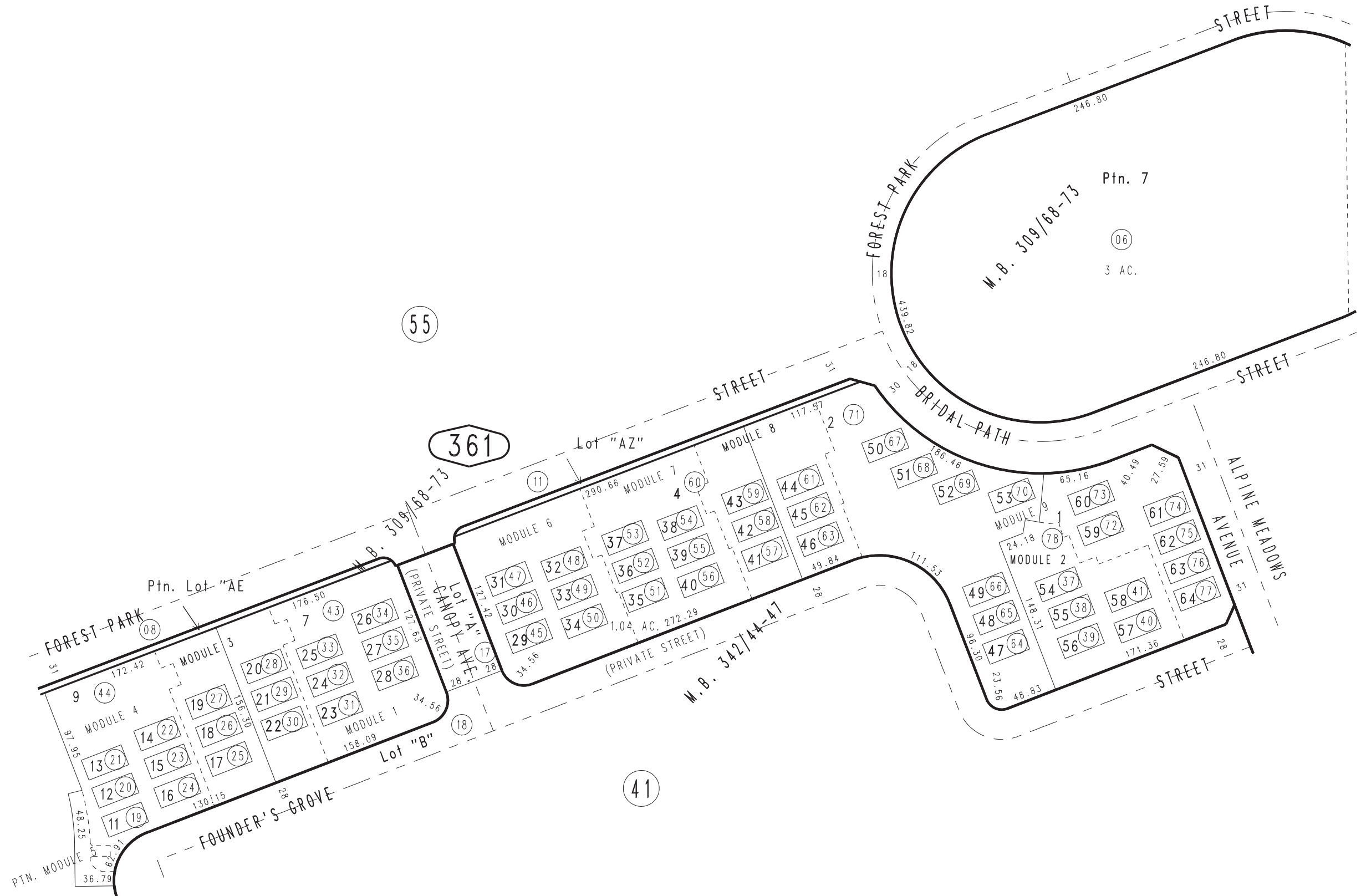


THIS MAP IS FOR THE PURPOSE OF AD VALOREM TAXATION ONLY.

Ptn. Tract No. 16419, M.B. 309/68-73

City of Chino
Tax Rate Area
1164

1055 - 36



Ptn. Tract No. 18693, M.B. 342/44-47, Condo Plan 15-0479898 Phase 1, Module 1
Condo Plan 15-0479899 Phase 2, Module 2, Condo Plan 15-0479900 Phase 3, Module 3
Condo Plan 15-0479901, Phase 4, Module 4, Condo Plan 15-0513205 Phase 5, Ptn. Module 5
Condo Plan 15-0513206 Phase 6, Module 6, Condo Plan 15-0513207 Phase 7, Module 7 Ptn. S.E.1/4, Sec.28
Condo Plan 15-0513208 Phase 8, Module 8, Condo Plan 15-0532761 Phase 9, Module 9 T.2S.,R.7W.

Assessor's Map
Book 1055 Page 36
San Bernardino County

REVISED
06/23/14 KC-MC
07/16/15 RM
02/05/16 RU
03/23/16 GW