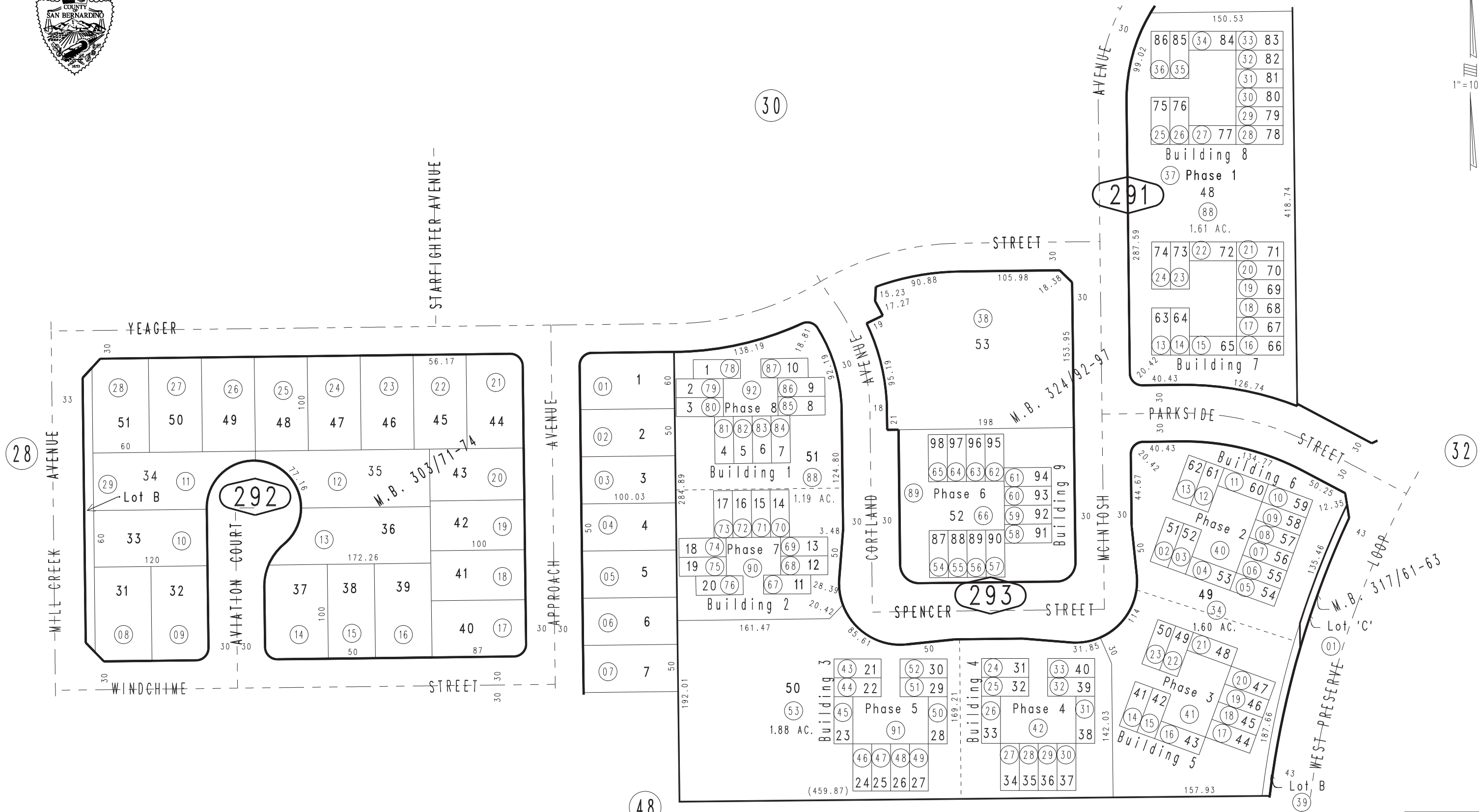


THIS MAP IS FOR THE PURPOSE OF AD VALOREM TAXATION ONLY.

Ptn. Tract No. 16520, M.B. 303/71-74

City of Chino
Tax Rate Area
1164

1055 - 29



Ptn. Tract No. 17147, M.B. 324/92-97, Condo Plans 07-0437187 Phase 1,
11-0221850 Phase 2, 11-0221852 Phase 3, 11-0295831 Phase 4, 13-0032640 Phase 5
13-0086020 Phase 6, 13-0111301 Phase 7, 13-0111302 Phase 8
Amending Condo Plan 13-0317732 Phase 2, Ptn. Tract No. 17515, M.B. 317/61-63

Ptn. S.E.1/4, Sec.29
T.2S.,R.7W.

Assessor's Map
Book 1055 Page 29
San Bernardino County

REVISED
03/05/13 LH
03/26/13 RU
03/27/13 RU
08/15/13 GW-MC
11/20/13 RU
04/18/14 RU

November 2004