

THIS MAP IS FOR THE PURPOSE OF AD VALOREM TAXATION ONLY.

# Ptn. Parcel Map No. 19689, P.M. 248/98-102

City of Chino  
Tax Rate Area  
1164

1055 - 10



07

454.14

Ptn. Par. 3

ASSESSED ON PG09

11

634.57

722.23

101

696.08

282.92

09

Ptn. Par. 8

ASSESSED ON PG09

Ptn. Par. 7

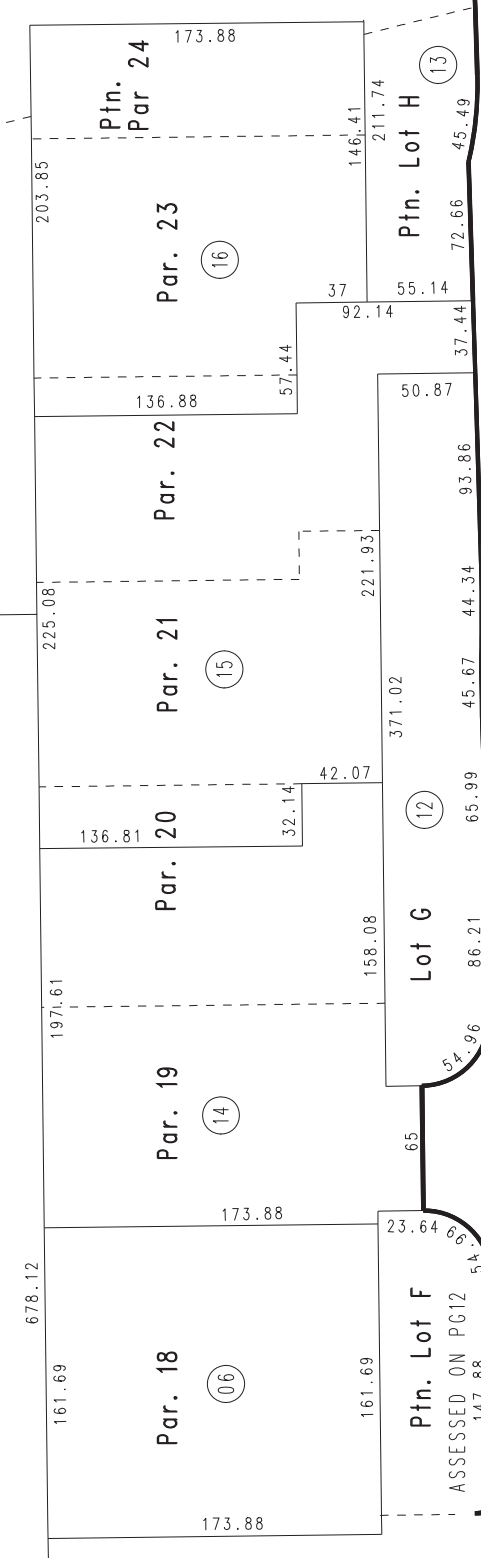
05

6.40 AC.

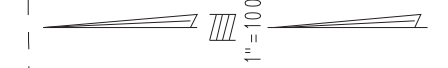
400.81

12

Ptn. N.E.1/4, Sec.28  
T.2S.,R.7W.



54



KIMBALL AVENUE

KIMBALL AVENUE

56

37

Assessor's Map  
Book 1055 Page 10  
San Bernardino County