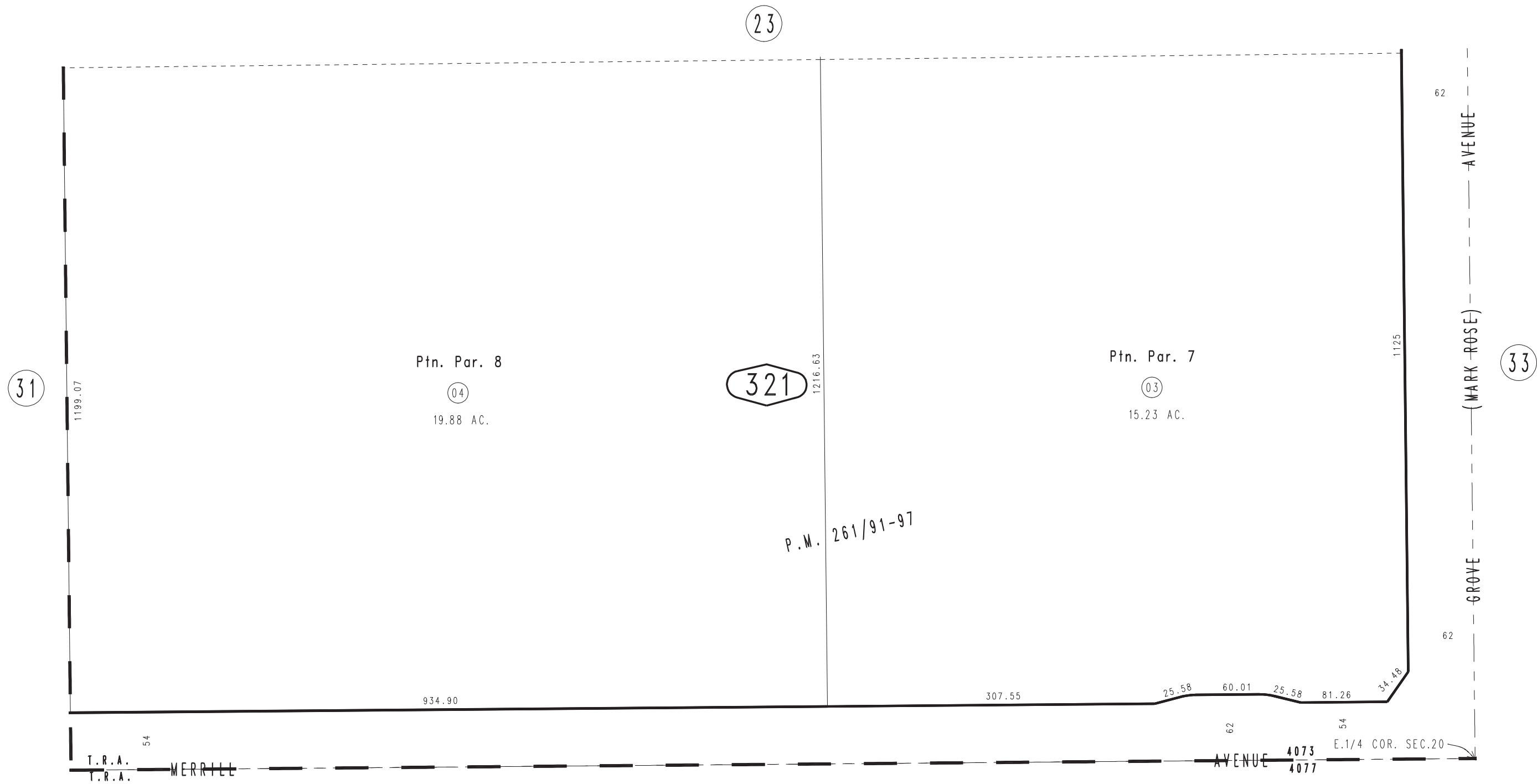


THIS MAP IS FOR THE PURPOSE  
OF AD VALOREM TAXATION ONLY.

# Ptn. Parcel Map No. 20161, P.M. 261/91-97

City of Ontario  
Tax Rate Area  
4073,4077

1054 - 32



1026  
08

Ptn. N.E.1/4, Sec.20  
T.2S.,R.7W.

Assessor's Map  
Book 1054 Page 32  
San Bernardino County

REVISED  
12/14/22 KA  
11/21/23 KA