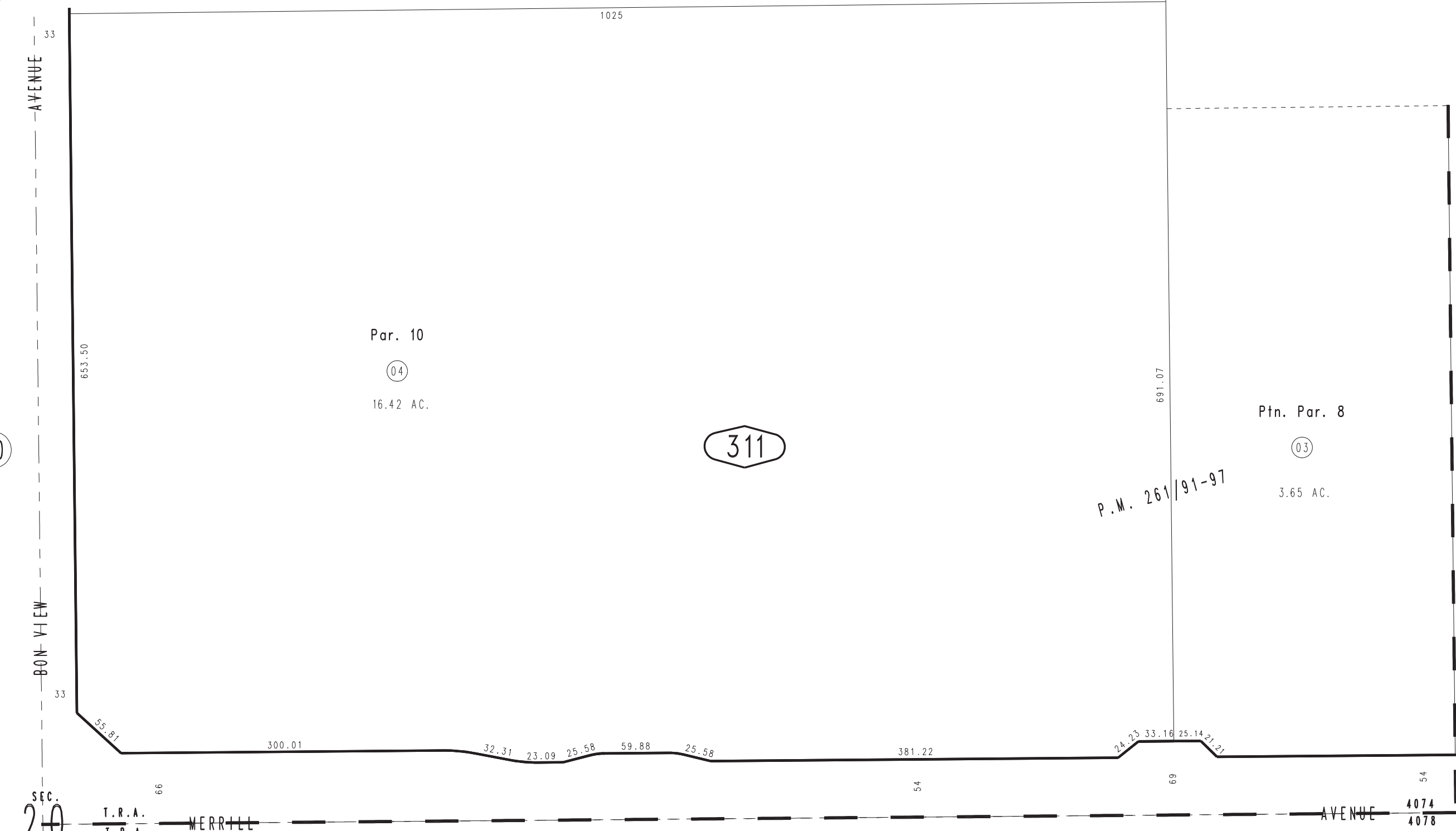


THIS MAP IS FOR THE PURPOSE
OF AD VALOREM TAXATION ONLY.

Ptn. Parcel Map No. 20161, P.M. 261/91-97

City of Ontario
Tax Rate Area
4074,4078

1054 - 31



SEC. 20
T.2S.,R.7W.

T.R.A. MERRILL T.R.A.

1026
08

Ptn. N.E.1/4, Sec.20
T.2S.,R.7W.

Assessor's Map
Book 1054 Page 31
San Bernardino County

REVISED
11/20/23 KA