

THIS MAP IS FOR THE PURPOSE OF AD VALOREM TAXATION ONLY.

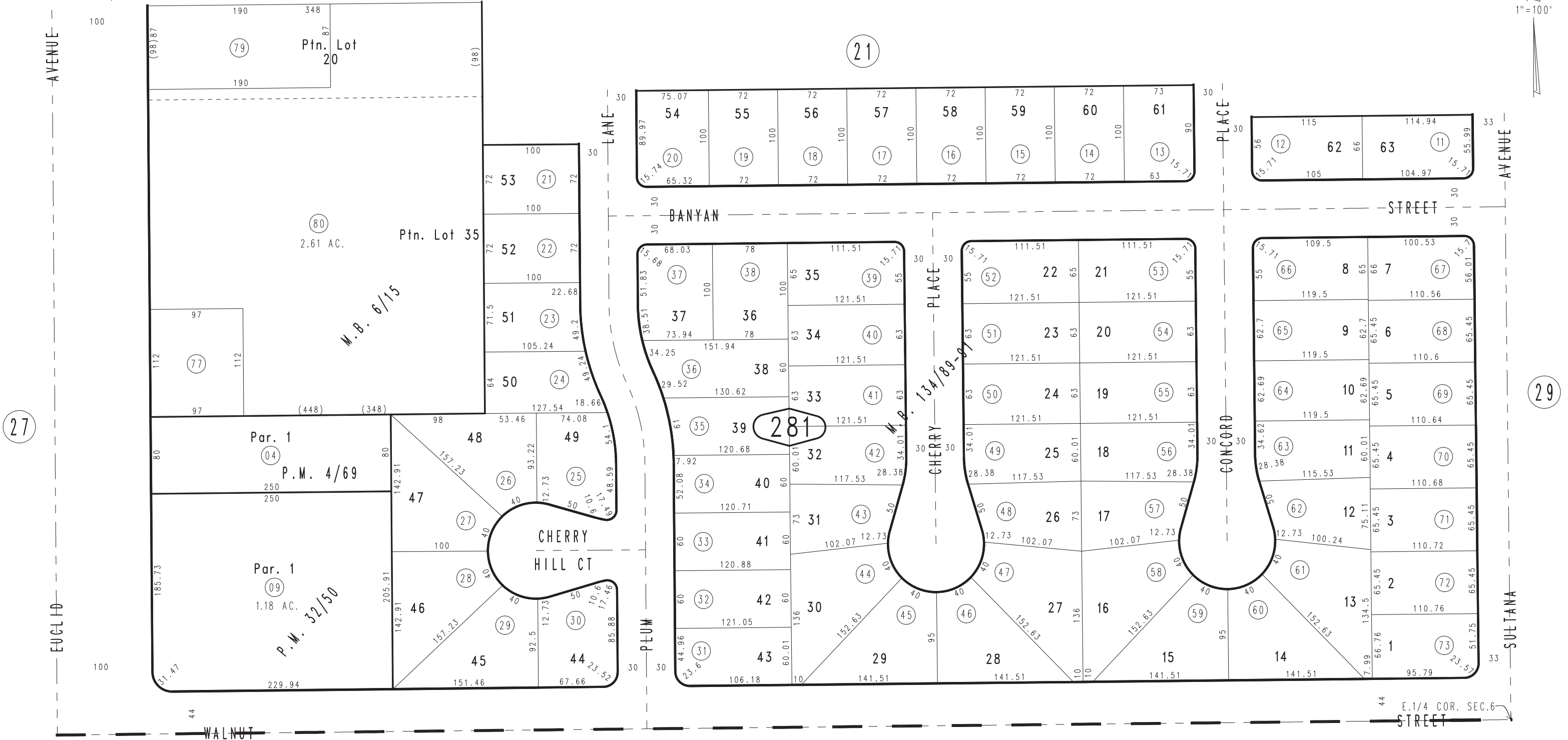
Ptn. Rancho Santa Ana Del Chino, M.B. 6/15

City of Ontario
Tax Rate Area
4052

1051 - 28



1"=100'



27

29

42

November 2004

Tract No. 9813, P.M. 134/89-91
Parcel Map No. 3503, P.M. 32/50
Parcel Map No. 353, P.M. 4/69

Ptn. N.E.1/4, Sec.6
T.2S.,R.7W.

Assessor's Map
Book 1051 Page 28
San Bernardino County

REVISED